



Squalicum Creek Re-Route Conceptual Plan

May 23, 2011



City of
Bellingham

About Squalicum Cr:

- Provides habitat for several salmon and trout species including coho, chum, pink, chinook, and pink salmon and steelhead and cutthroat trout
- Best potential salmon habitat within city jurisdiction
- Increasing development pressure

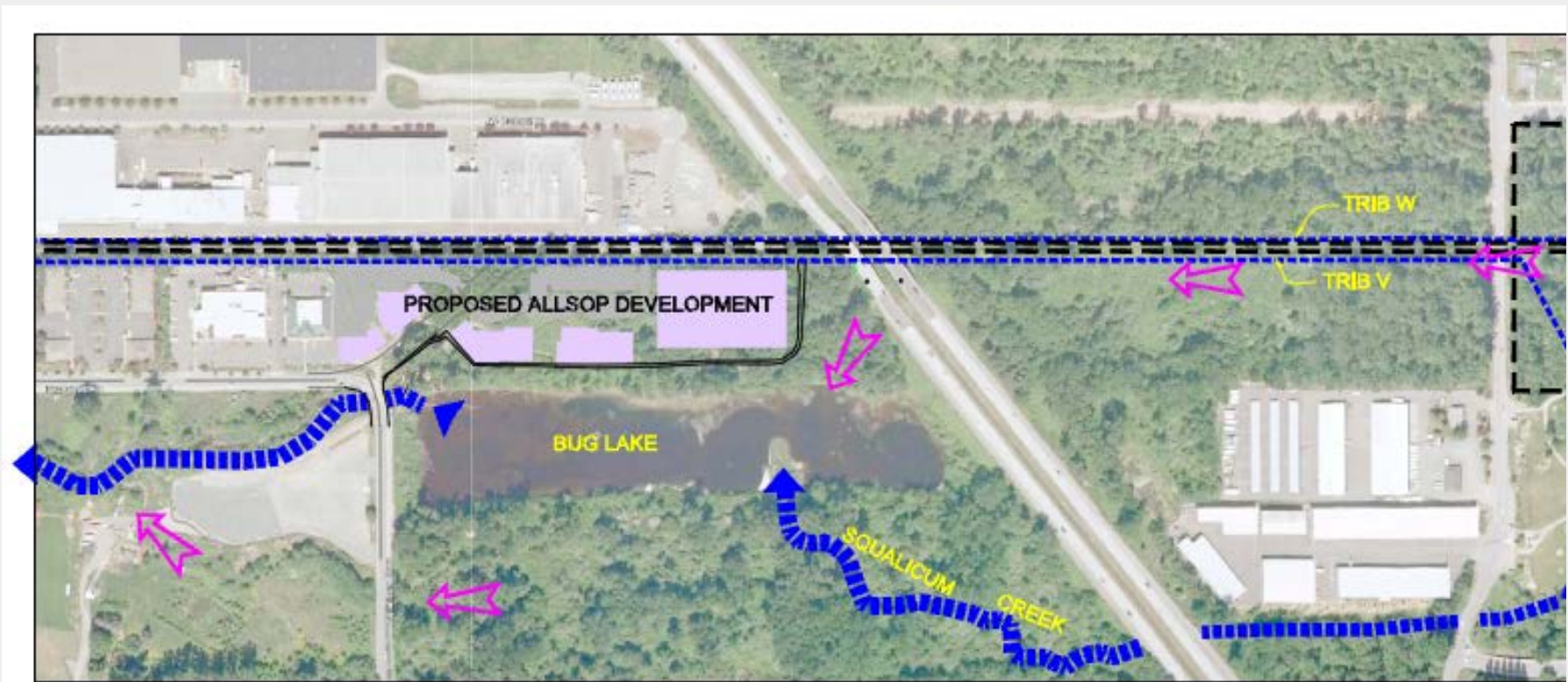
Habitat Problems:

- I-5 culverts are partial fish passage barriers
- Water Quality Problems:
 - Temperature, Dissolved oxygen, Fecal Coliform bacteria
- Warm water fish predation in Bug lake and Sunset Pond
- Flooding

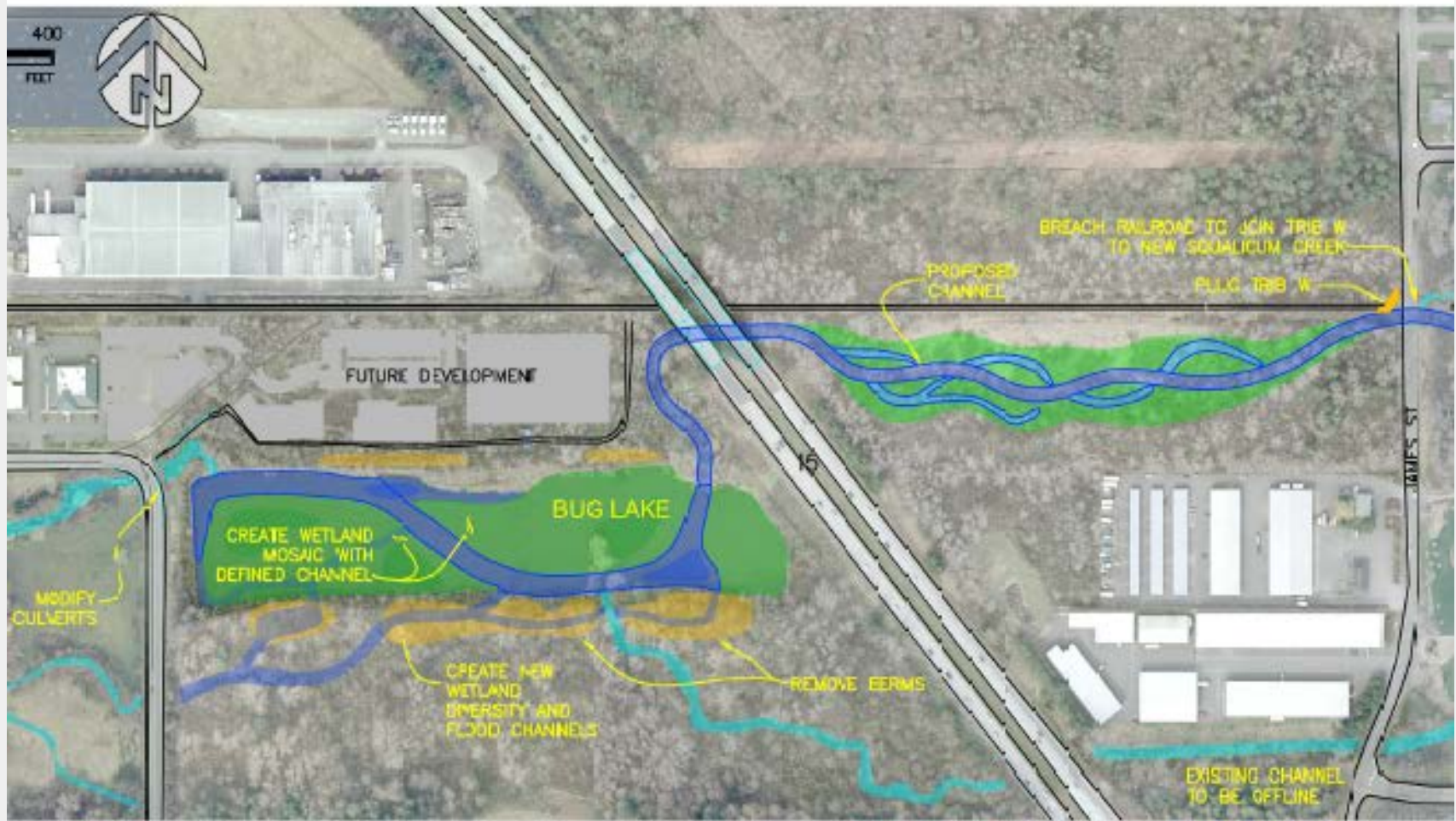
SQUALICUM CREEK RE-ROUTE CONCEPT



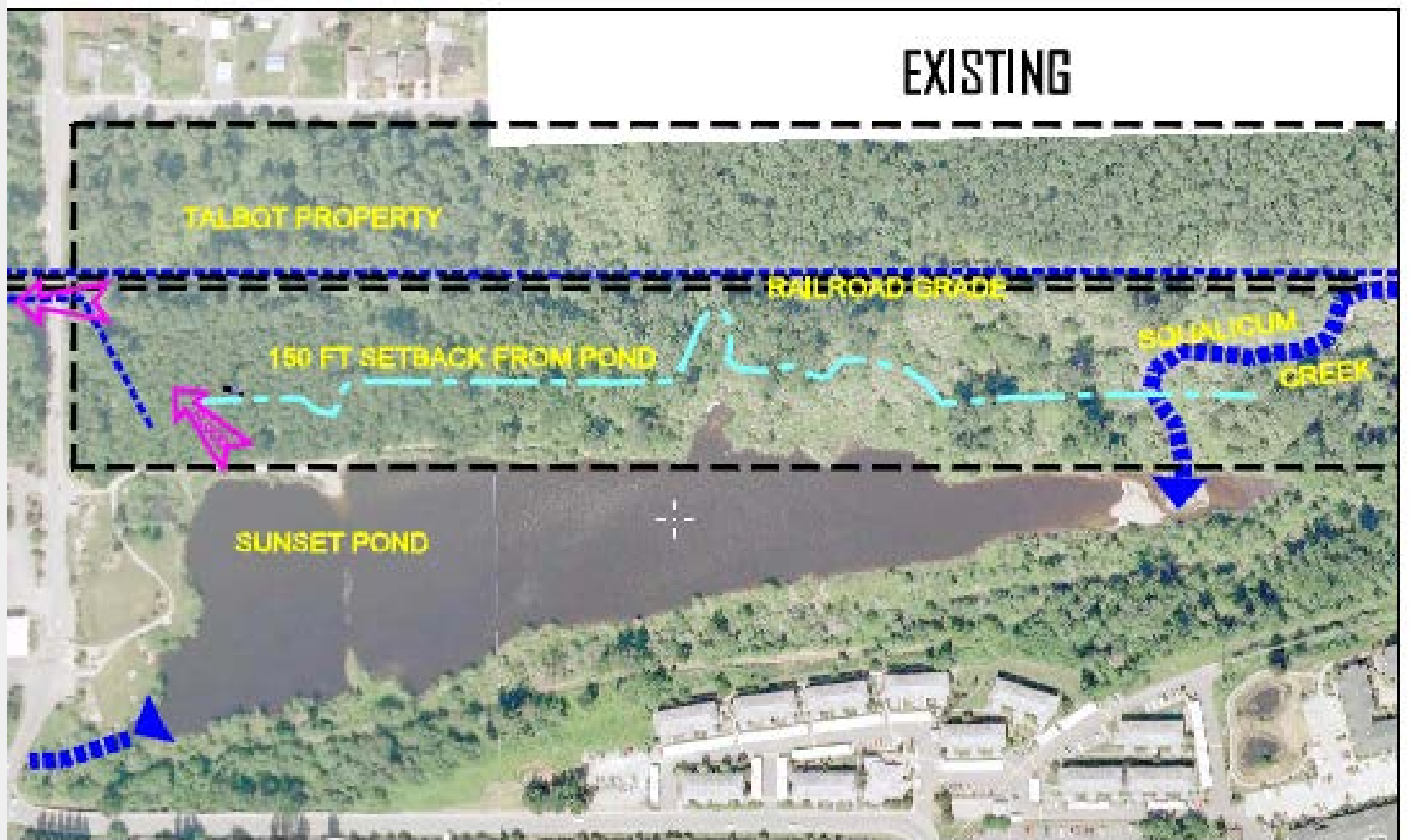
Entire length - conceptual



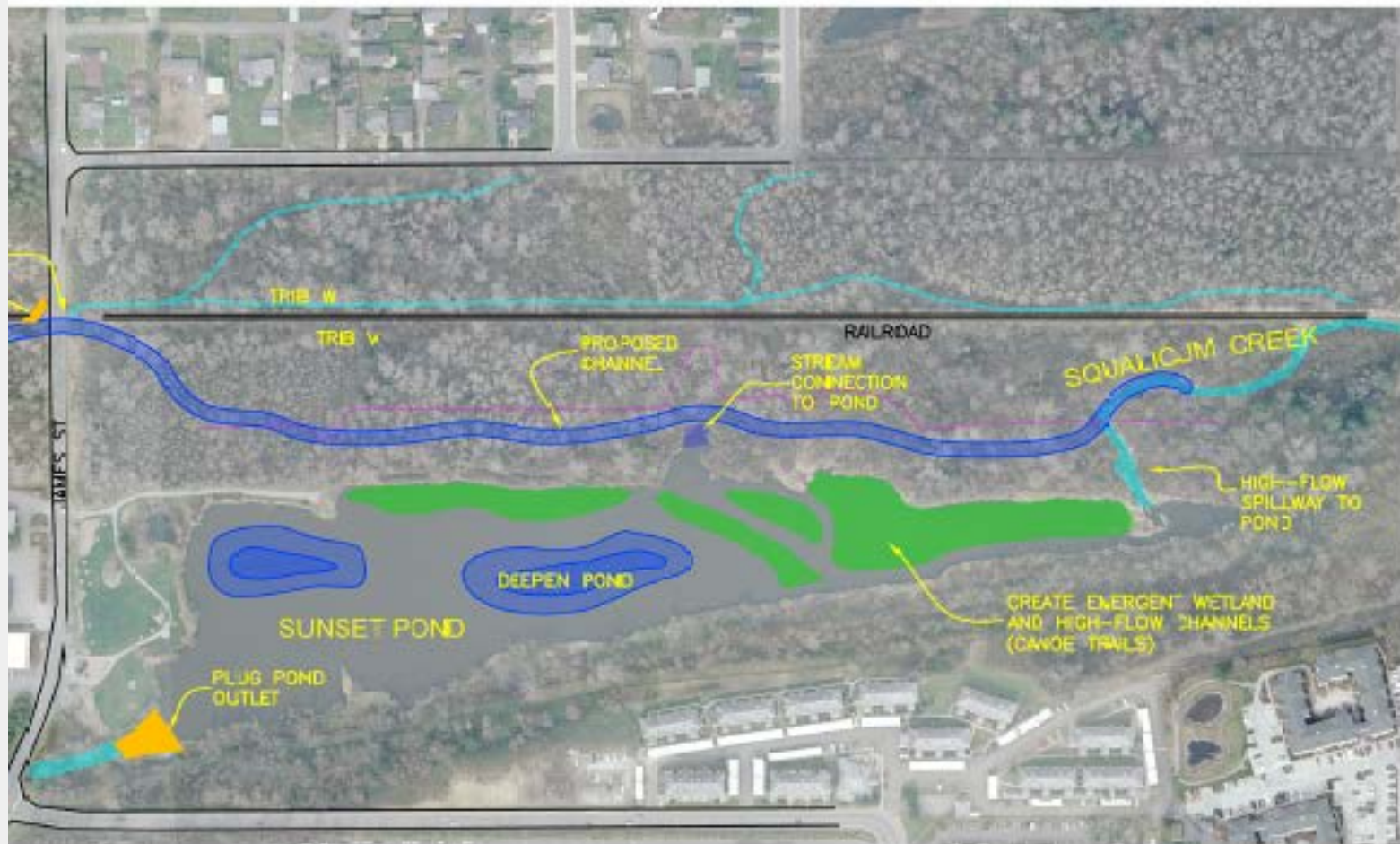
Downstream- Existing Flow



Downstream - conceptual



Upstream- Existing flow



Upstream- conceptual

