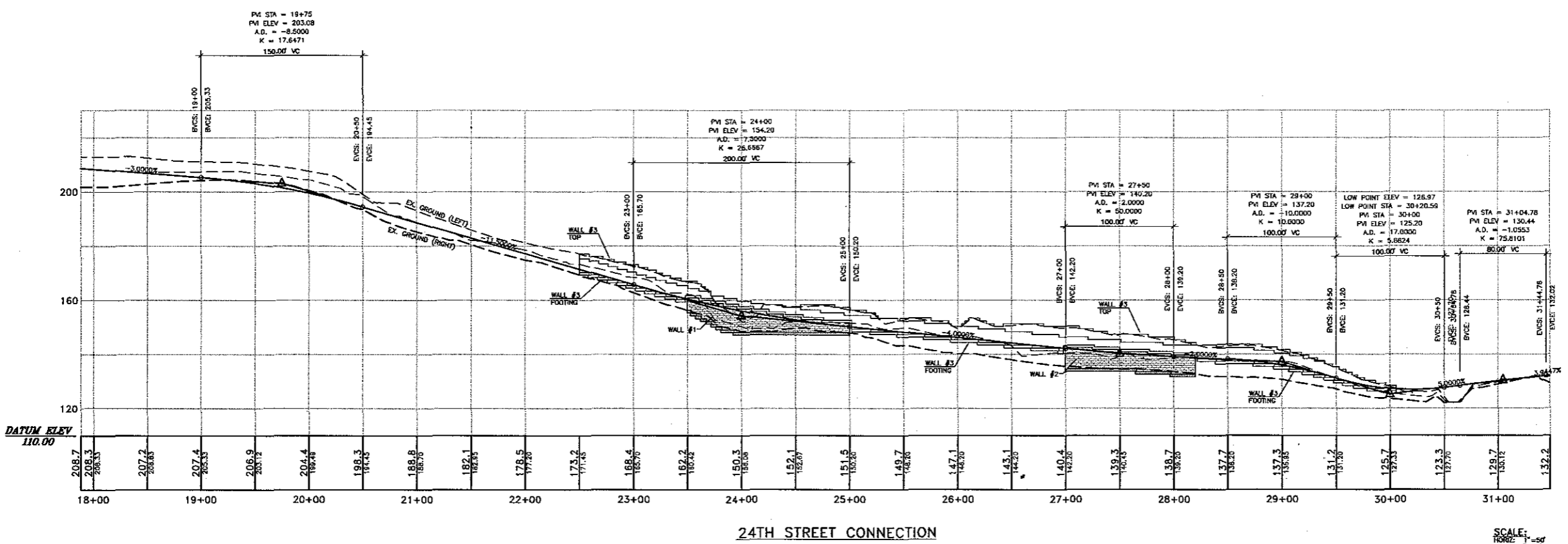
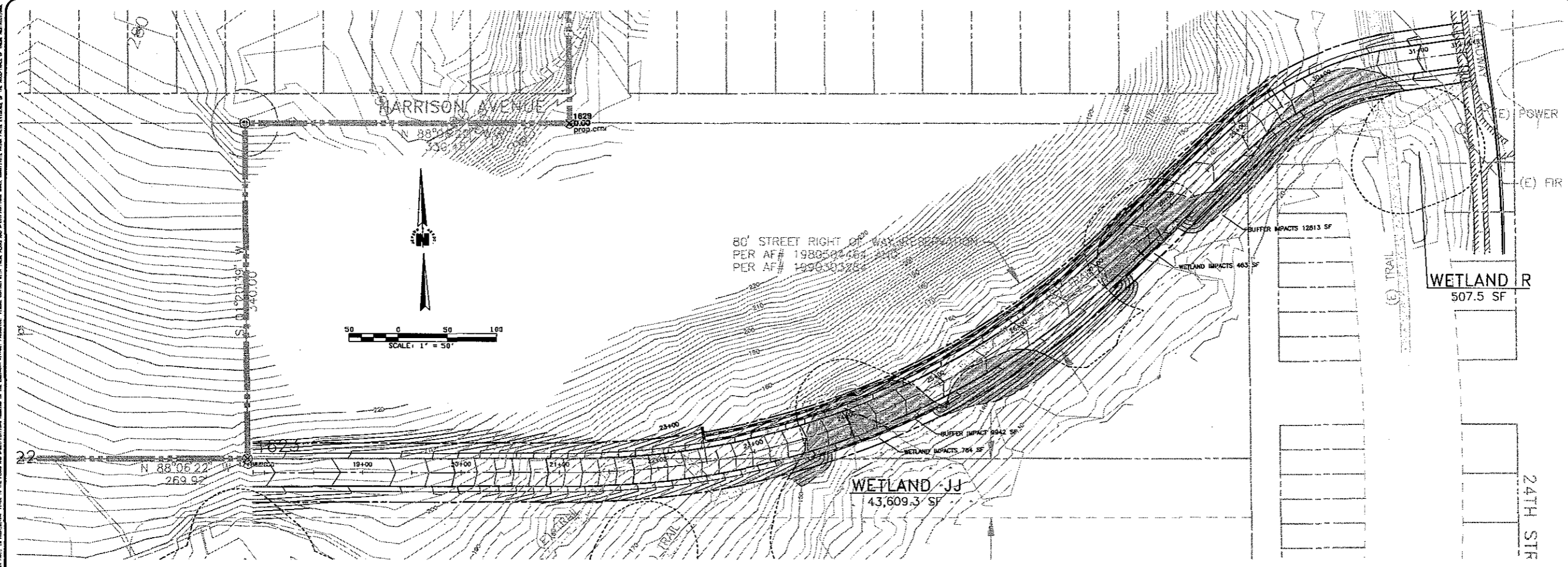


L:\Jepson Projects\2004\04127.dwg EIS Alternatives\Boneshtk\p-lay-24th connector.dwg - jbruhler - NOV 05, 2008 - 09:51:02



REVISIONS

DESIGNED BY: BJW
 DRAWN BY: BJW
 DATE: PRELIMINARY
 RONALD T. JEPSON
 ENGINEER
 REG. NO.: 9361

PRELIMINARY
NOT FOR CONSTRUCTION

RONALD T. JEPSON & ASSOC.
 CIVIL ENGINEERING - SURVEYING - LAND PLANNING
 222 GRAND MARINE SUITE C BELLEVUE WASHINGTON 98005
 360-733-5160 FAX 360-647-8838 WWW.RONALDTJEPSON.COM

PREPARED FOR: GRENBRIAR NORTHWEST
24TH STREET CONNECTOR ROAD
 FAIRHAVEN HIGHLANDS E.I.S.
 CHUCKANUT DRIVE
 COUNTY OF WHATCOMB, WASHINGTON

SCALE: AS SHOWN
 DATE: 9/8/2008
 SHEET: C-1
 NO.: 04127