
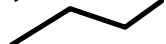

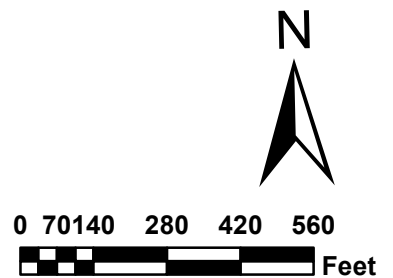


CIVIC FIELD ATHLETIC COMPLEX AND CIVIC TRAIL MAP

-  Civic Trail Loop1.2 miles out and back
-  Other trails
-  Civic Field Track.....400 meters (.25 mile)



CIVIC FIELD ATHLETIC COMPLEX

TRAIL DESCRIPTION

Easy gravel trail begins near the Sportsplex on Civic Field Way. Follow path through the woods, then along Frank Geri Fields to a loop trail through the woods east of Puget St. This trail connects to Salmon Woods trails and to Whatcom Creek Trail. Keep your dog on-leash, please.

TRAILHEAD

Use any of the parking lots at Civic Field Athletic Complex.

MILEAGE

- 1.2 mile loop. See map

Civic Field Athletic Complex is a community park established in the mid-1950's. Facilities include lighted football/soccer stadium, track and field facilities, four lighted and two unlighted softball fields, lighted baseball stadium, aquatic center, playground, skate park, bike park, privately operated indoor ice and soccer facility, parking, restrooms and trails.