

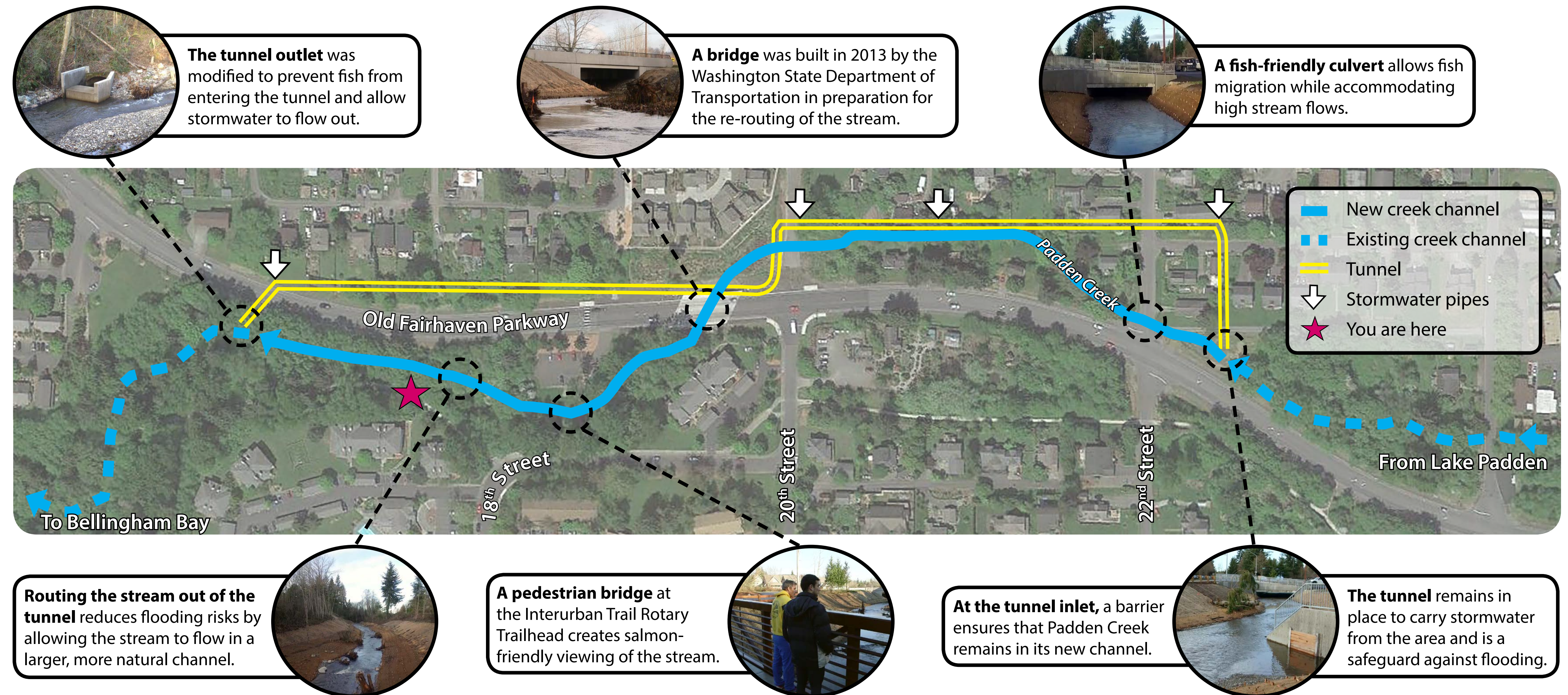
Daylighting PADDEN CREEK

After flowing in an underground tunnel for over 120 years, a section of Padden Creek is open to the daylight again. The Padden Creek Daylighting project restores fish passage, reduces flooding risk, and improves water quality in our community.

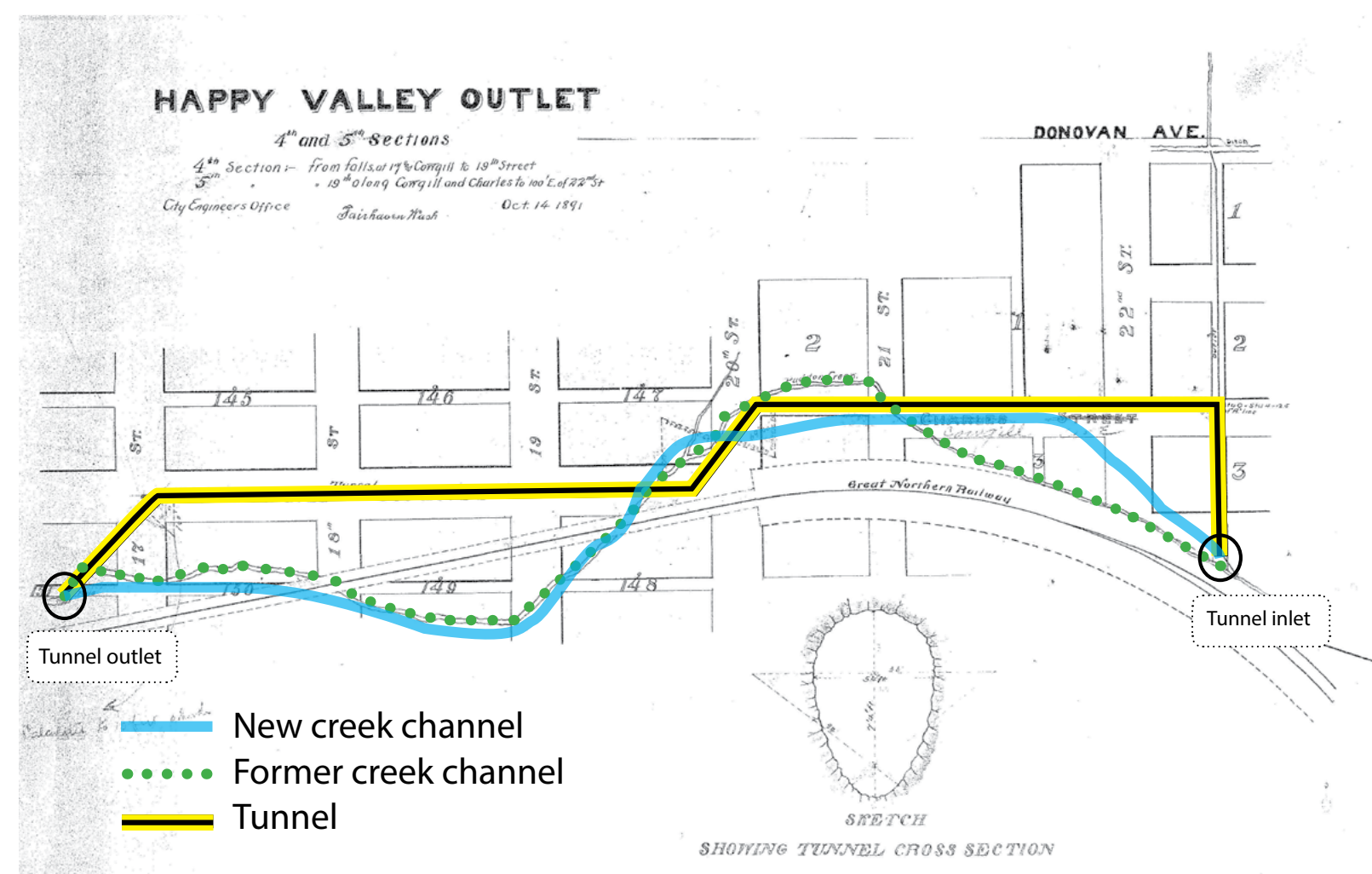
In the early 1890s, a portion of Padden Creek was diverted underground into a brick tunnel almost a half mile long. The tunnel was meant to drain wetlands and divert surface water, including Padden Creek, from the surrounding land in preparation for the Great Northern Railroad in Fairhaven. However, the railroad was never constructed.

Unfortunately, the undersized tunnel caused periodic flooding, created a barrier to migrating fish, and degraded water quality and habitat.

In 2015, the City of Bellingham daylighted a section of Padden Creek by re-routing the creek out of an underground tunnel and into an open stream channel. The wider, more natural channel approximates the creek's historical location and provides fish access to over a mile of previously inaccessible habitat. The project also reduces the risk of flooding for over 150 nearby residences.



1891 Historical Tunnel Map



Visit cob.org and search "Padden Creek" to learn more.

Funding Partners:

