

AMENDED PLAT OF FAIRHAVEN
BLOCK 31

BUILDING CORNER IS 0.07' NORTH OF LOT LINE

#1210 11TH STREET
BRICK BUILDING

BUILDING CORNER IS 0.02' EAST & 0.02' SOUTH OF LOT CORNER

1 Basement Level Floor Plan
SCALE: 1/4" = 1'-0"



RMC ARCHITECTS
RMC Architects, PLLC • 1223 Railroad Avenue • Bellingham, WA 98225
P: 360.676.7733 • F: 360.738.0448 • www.rmcarchitects.com

Rocket Fairhaven
1212 11th Street
Bellingham, Washington 98225

Job No:	1119	Date:	2011-11-21
File No:	1119 A200-203 Floor Plans		
Drawn By:	JTWillard		
Checked By:	JLMcClure		
Issued For:	DESIGN REVIEW		

BASEMENT LEVEL
FLOOR PLAN

A200

AMENDED PLAT OF FAIRHAVEN
BLOCK 31

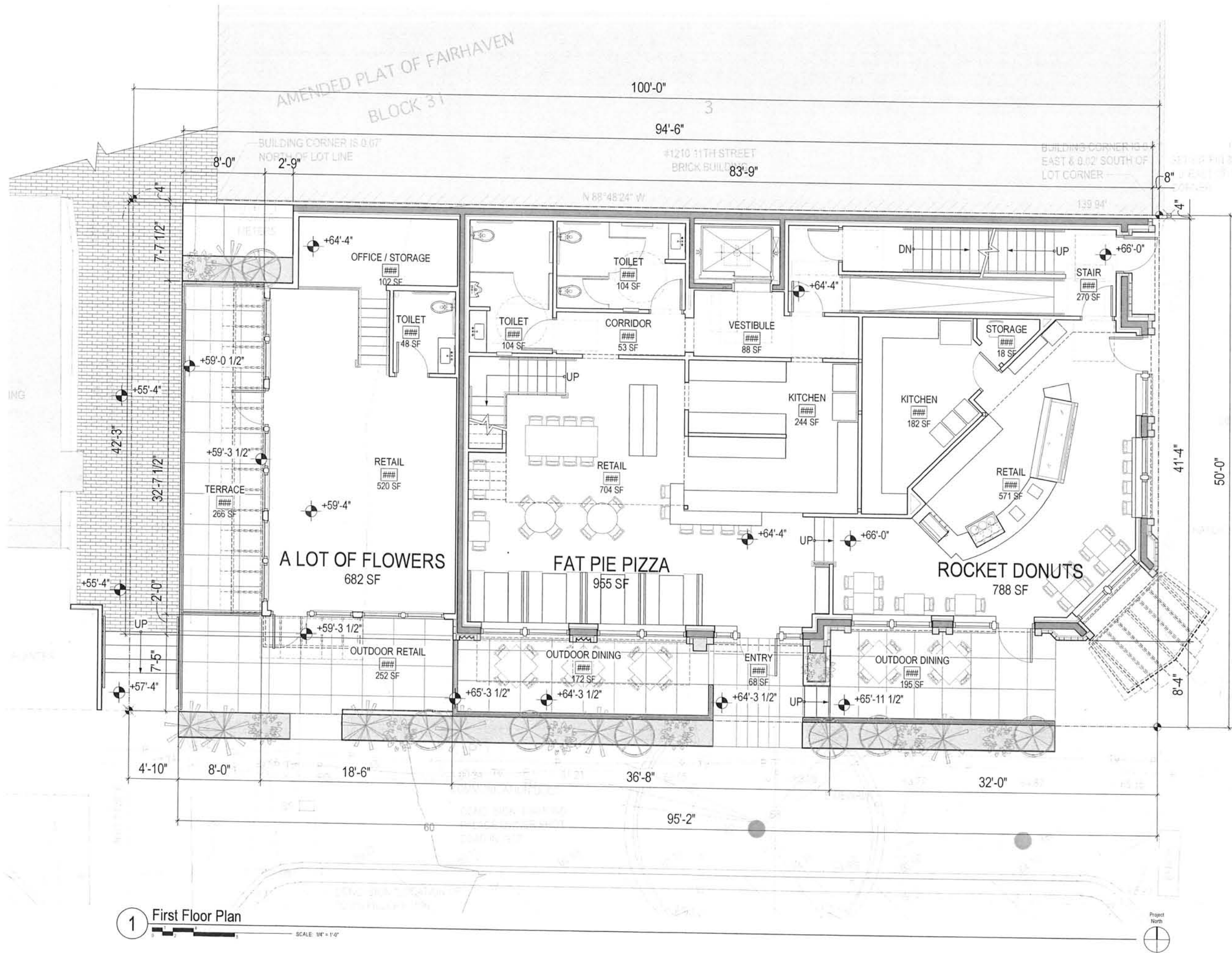
100'-0"

94'-6"

#1210 11TH STREET
BRICK BUILDING

83'-9"

BUILDING CORNER IS 0.02'
EAST & 0.02' SOUTH OF
LOT CORNER



RMC
ARCHITECTS

RMC Architects, PLLC - 1223 Railroad Avenue - Bellingham, WA 98225
P: 360.676.7733 - F: 360.738.0448 - www.rmcarchitects.com

Rocket Fairhaven
1212 11th Street
Bellingham, Washington 98225

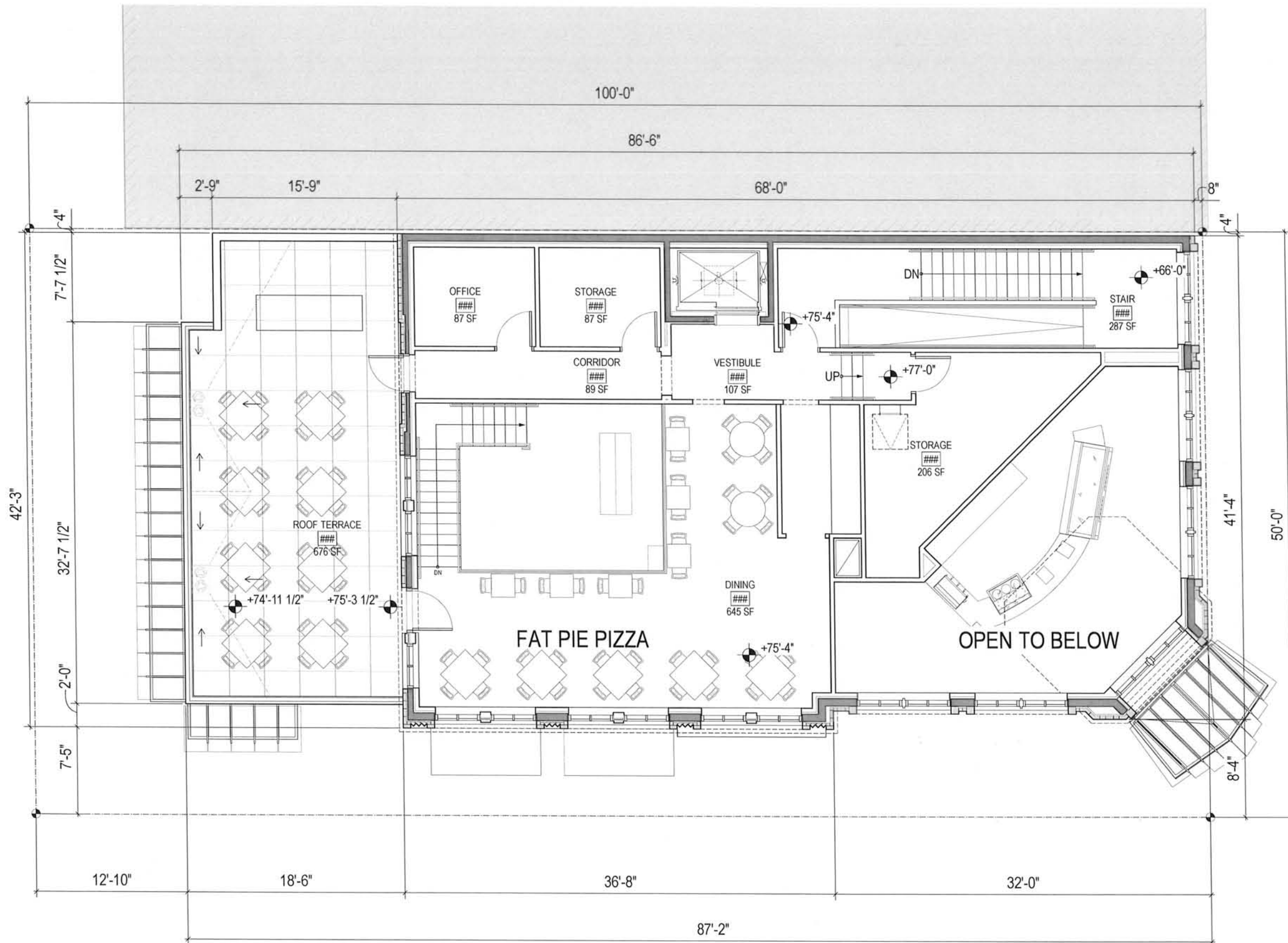
Job No.	1119	Date:	2011-11-21
File No.	1119 A200-203	Floor Plans	
Drawn By:	JTWillard		
Checked By:	JLMcClure		
Issued For:	DESIGN REVIEW		

FIRST FLOOR
PLAN

A201

1 First Floor Plan
SCALE: 1/4" = 1'-0"





Rocket Fairhaven
 1212 11th Street
 Bellingham, Washington 98225

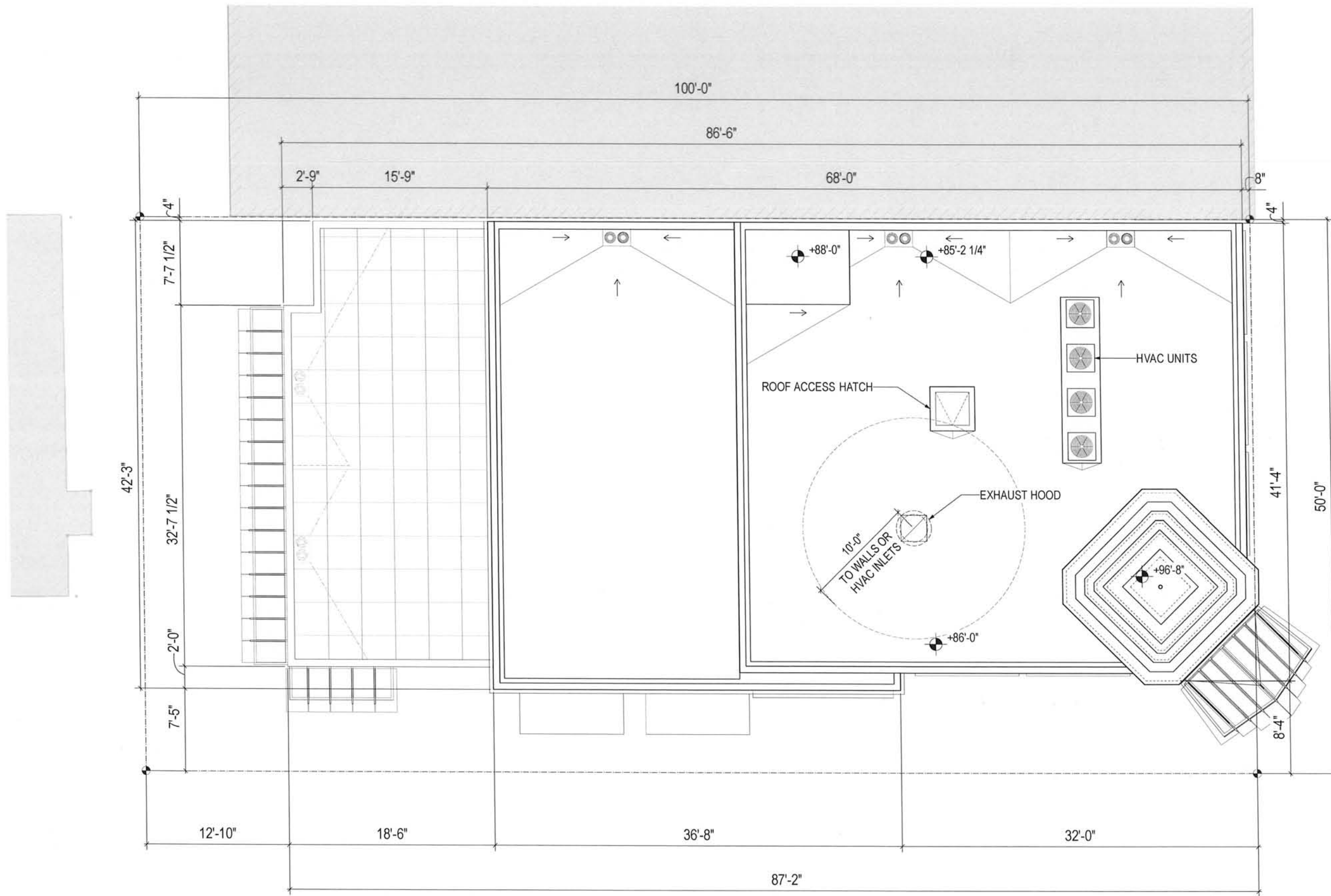
Job No:	1119	Date:	2011-11-21
File No:	1119 A200-203 Floor Plans	Drawn By:	JTWillard
Checked By:	JLMcClure	Issued For:	DESIGN REVIEW

SECOND FLOOR PLAN

A202

1 Second Floor Plan
 SCALE: 1/4" = 1'-0"





1 Roof Plan
SCALE: 1/4" = 1'-0"



Rocket Fairhaven
 1212 11th Street
 Bellingham, Washington 98225

Job No:	1119	Date:	2011-11-21
File No:	1119 A200-203 Floor Plans		
Drawn By:	JTWillard		
Checked By:	JLMcClure		
Issued For:	DESIGN REVIEW		

ROOF PLAN

A203