

# Center and Edge England Does Infill



Northwest

## Liverpool & Chester



A

Liverpool and Chester competed for centuries to become England's prominent western port. Liverpool won. Now both cities are attempting to revitalize their urban centers. Liverpool's Albert Dock and Rope Walks (A, B) projects seek to succeed where the 1960's urban renewal projects (C) failed. Though known for its parks (D), Liverpool has failed to include institutional infrastructure in its downtown projects (E).



J

Chester, a leader in preservation, is attempting to promote infill development while preserving its architectural heritage...even if that heritage is an aluminum-sided YMCA building built in 1968 (F). It involves concealing parked cars in interior courts (G). Port Sunlight (H) was developed as a Victorian answer to urban blight. It featured a factory, attached single-family housing, common greens (J), a church, a commercial district, a train station, and space for monuments (I) and museums. Today, with the factory still in operation, it is one of the Northwest's most prized living environments.



B



C



D



E



F



G



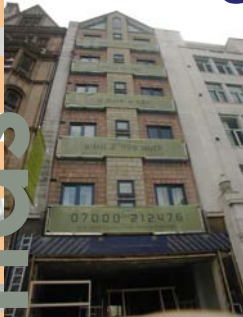
H



I

## Port Sunlight Birmingham

Birmingham is Great Britain's second largest city. Like Liverpool, it had an industrial heyday in the 18th Century and was heavily bombed during World War II. The city was subjected to highway-centric reconstruction plans in the 1960s, accommodating an inner-city beltway that girdled and slowly choked out downtown development. The beltway is now coming down, and new development is finding its way into the core, particularly near Victoria Square (K, M). New housing projects, like the re-use of the post office (L) and the expansive canal-side Brindley Place (N), are redefining the urban living experience in Birmingham. The new city center incorporates parks, houses of worship, shopping and schools, helping it meet resident demands. Bournville, a Birmingham suburb, was a contemporary of Port Sunlight, offering another Victorian alternative to urban industrial blight. It also featured a factory (Cadbury's, no less), and a fully-served community with a church, common greens, detached and attached dwelling units (O, P), a train station (Q), landscaping and a small commercial center (R). It thrives today.



K



L



M

N



R



Q



P



O

Midlands

## Bournville