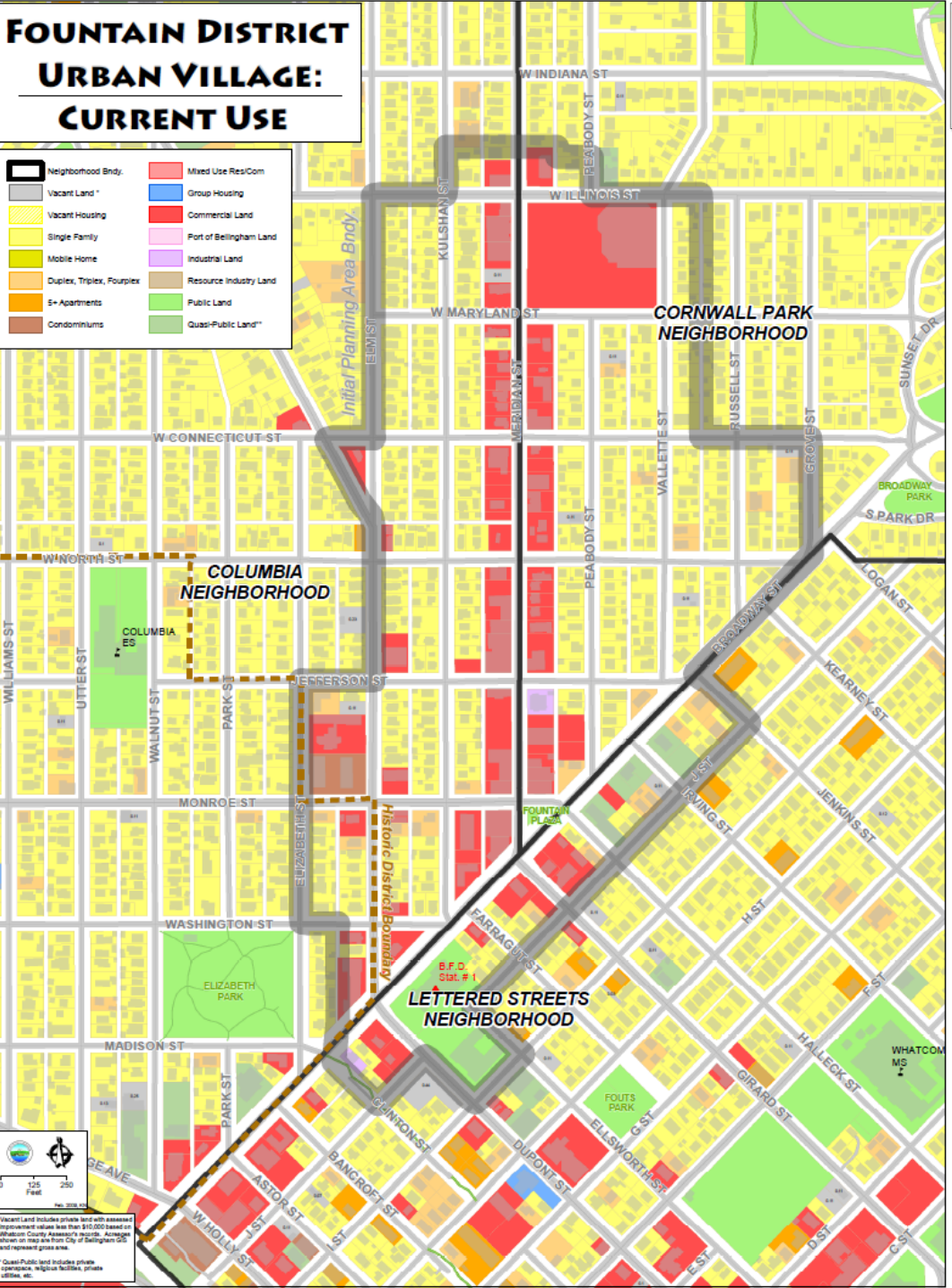


FOUNTAIN DISTRICT URBAN VILLAGE: CURRENT USE

- Neighborhood Bndy.
- Vacant Land *
- Vacant Housing
- Single Family
- Mobile Home
- Duplex, Triplex, Fourplex
- 5+ Apartments
- Condominiums
- Mixed Use Res/Com
- Group Housing
- Commercial Land
- Port of Bellingham Land
- Industrial Land
- Resource Industry Land
- Public Land
- Quasi-Public Land**

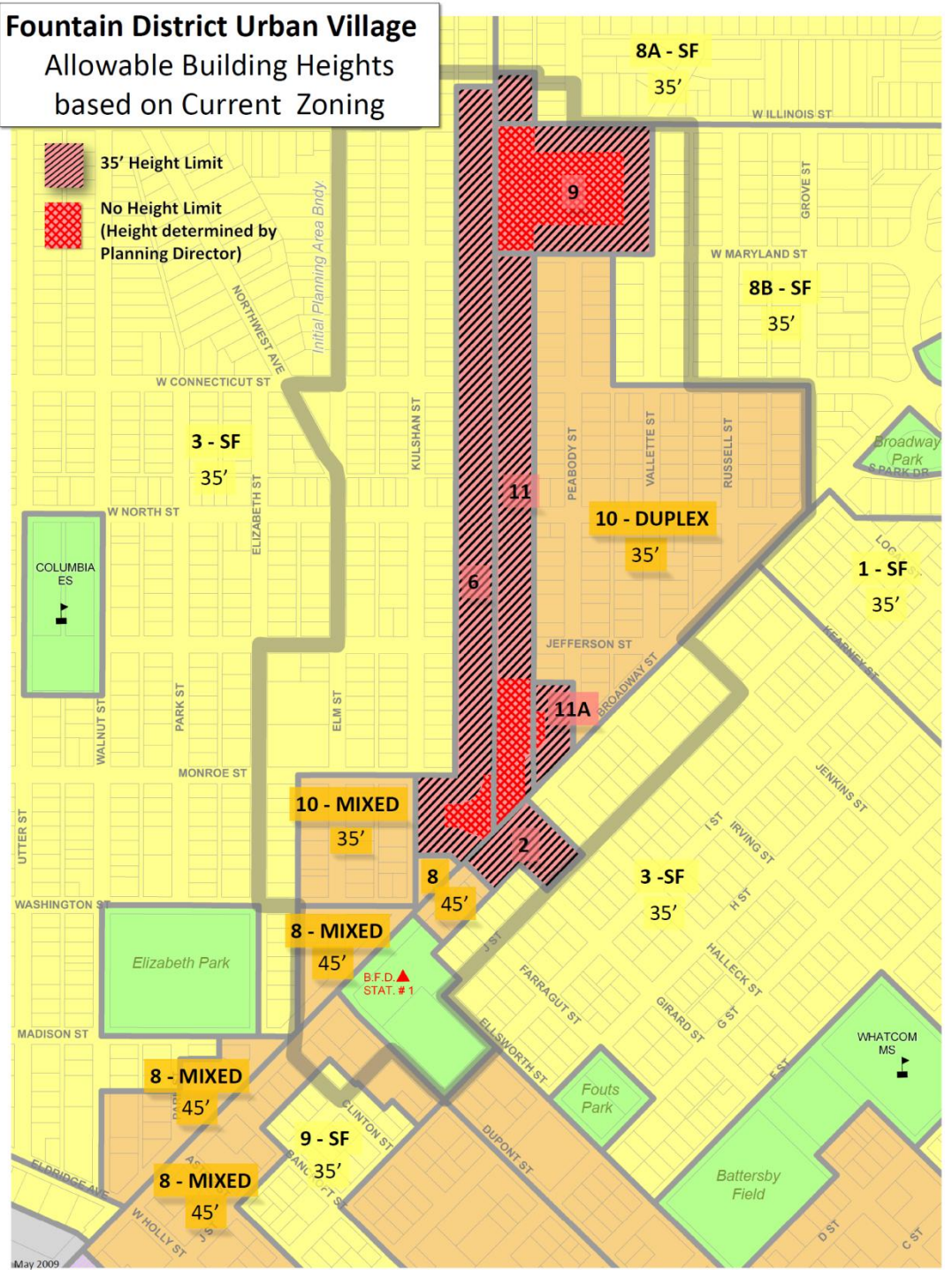


Vacant Land includes private land with assessed improvement value less than \$10,000 based on Whatcom County Assessor's records. Average shown on map and from City of Bellingham GIS and reported gross area.

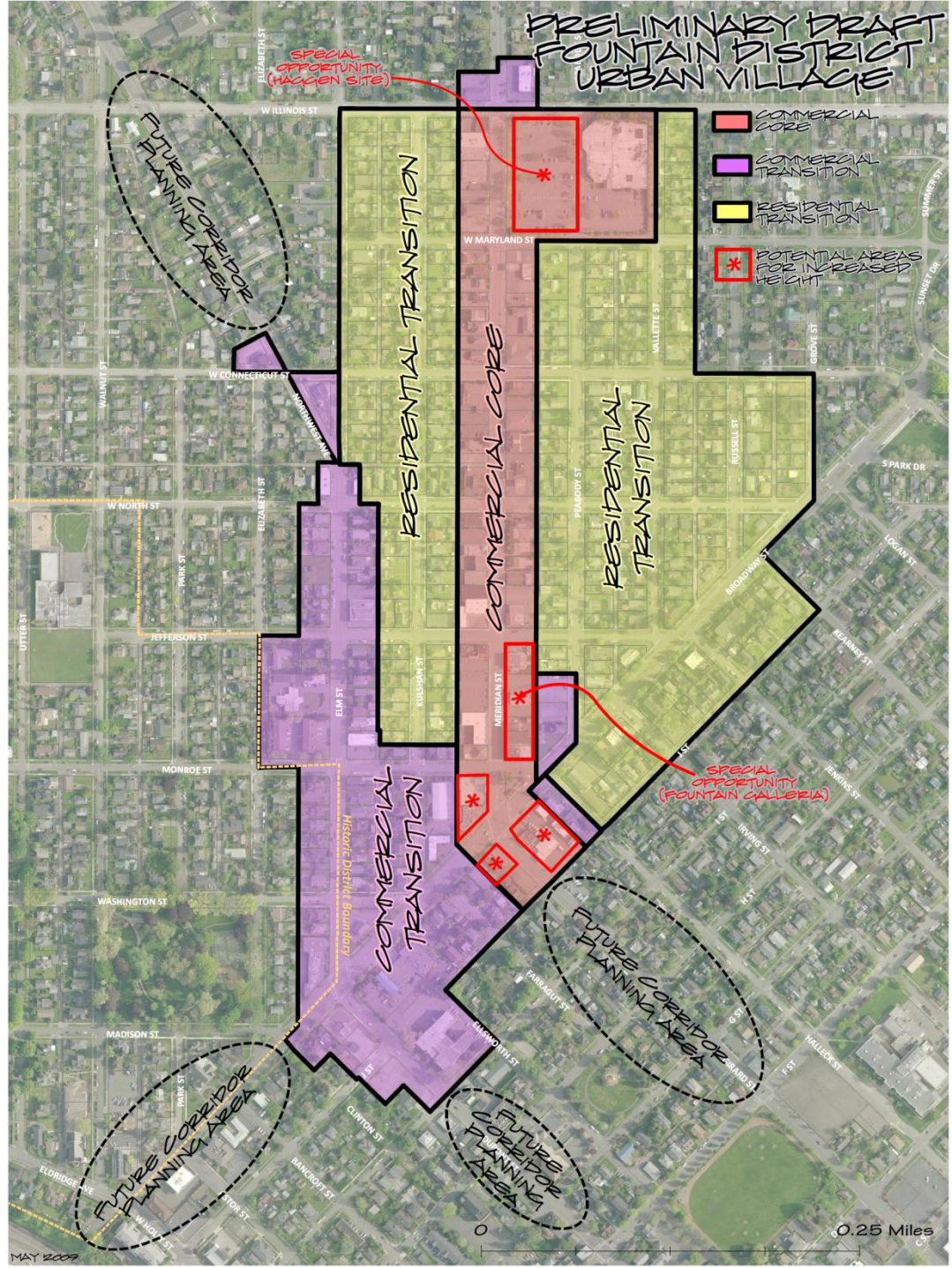
Qualifications and includes private corporate, religious facilities, private offices, etc.

Fountain District Urban Village Allowable Building Heights based on Current Zoning

- 35' Height Limit
- No Height Limit (Height determined by Planning Director)



May 2009



0.25 Miles