

Fountain District Urban Village Public Input Workshops

Meeting #3

Development Character Permitted Uses, Design, Scale & Transitions

April 22nd, 2009

City of Bellingham, Washington

Development Character Zones:

Residential TRANSITION Zones

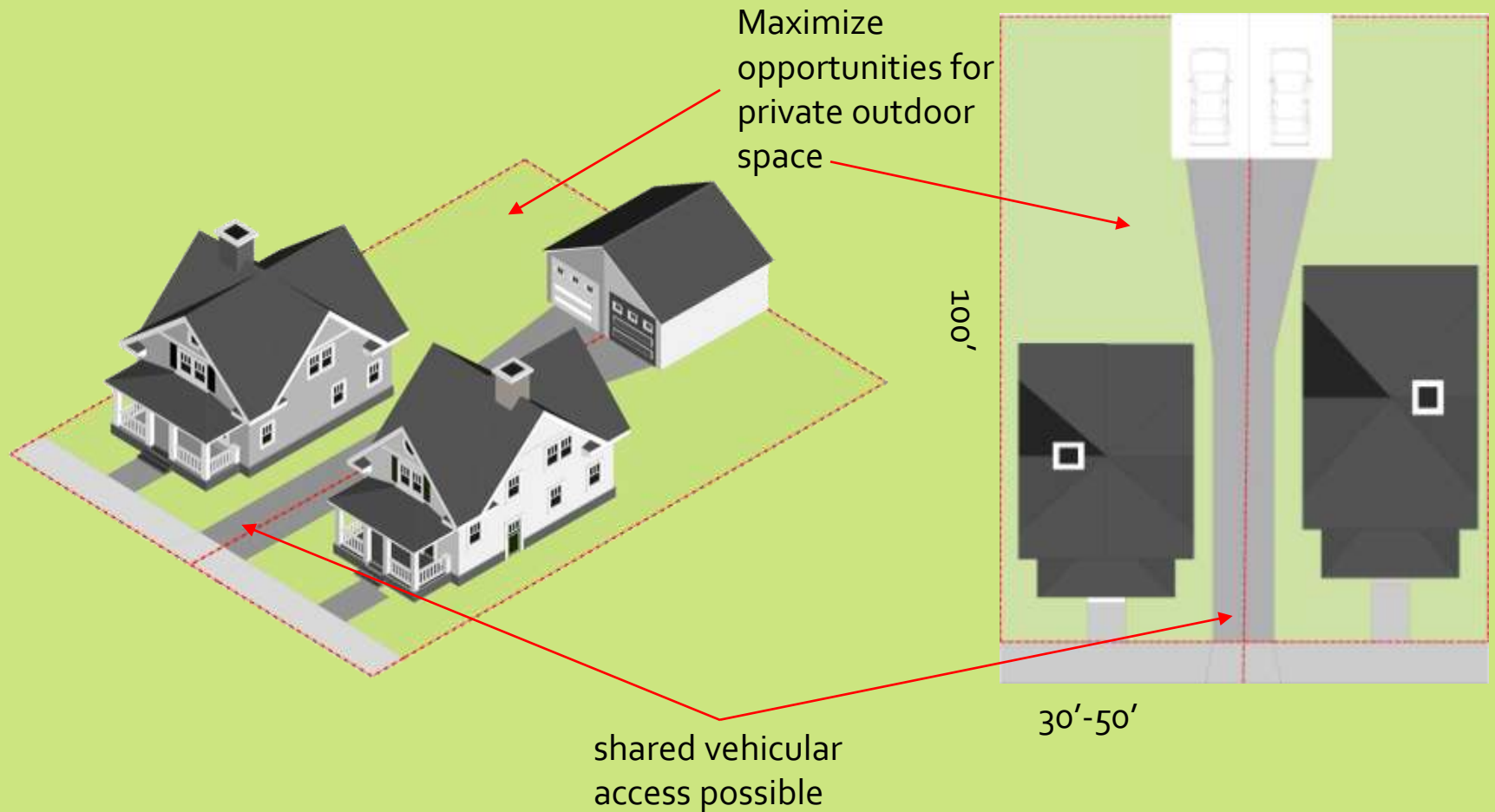
- Single Family
- Infill Housing Toolkit
- Project Status



Residential Transition Housing: Small & Smaller Lot



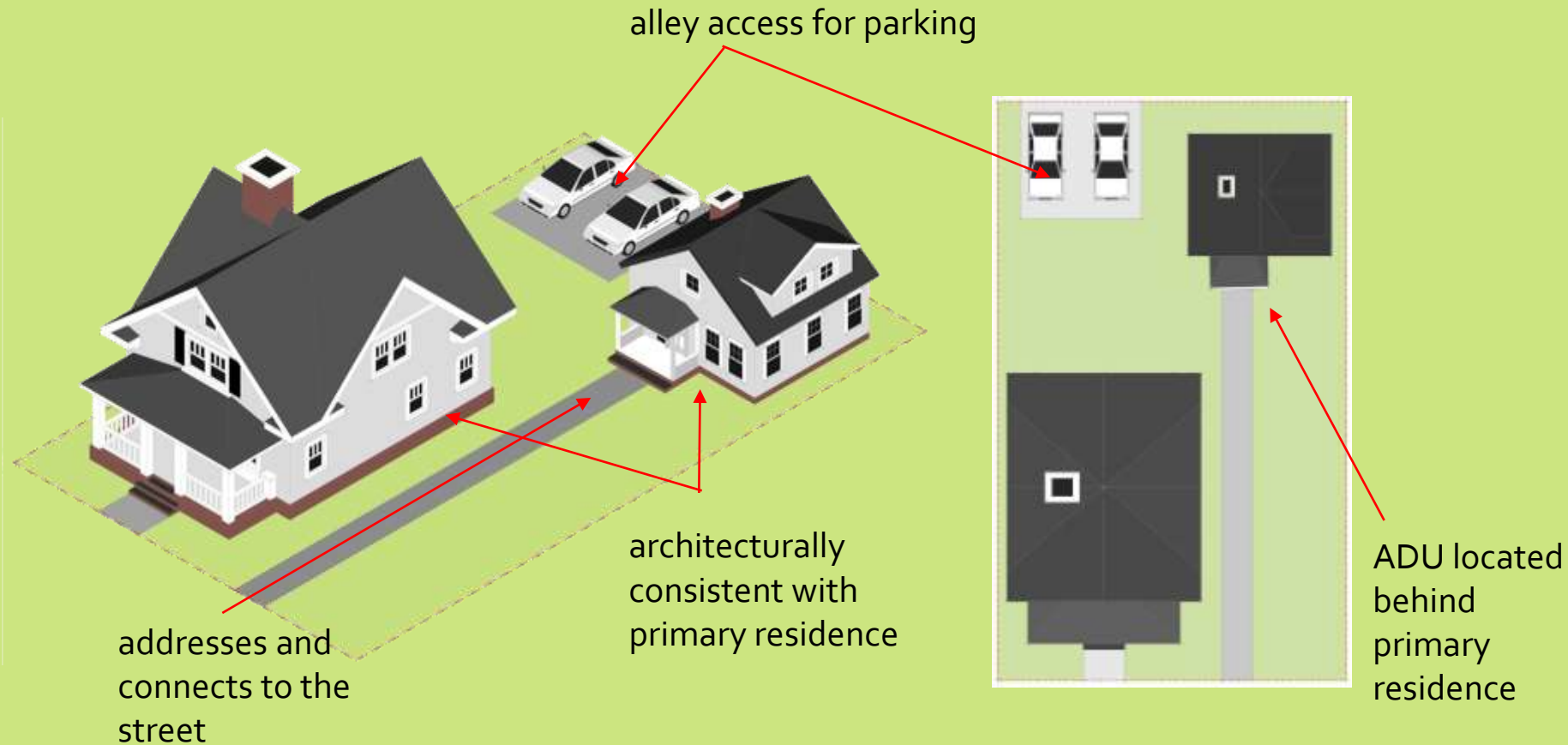
Residential Transition Housing: Small and Smaller Lot



Residential Transition Housing: Detached Accessory Dwelling



Residential Transition Housing: Detached Accessory Dwelling



Residential Transition Housing: Duplex/Triplex

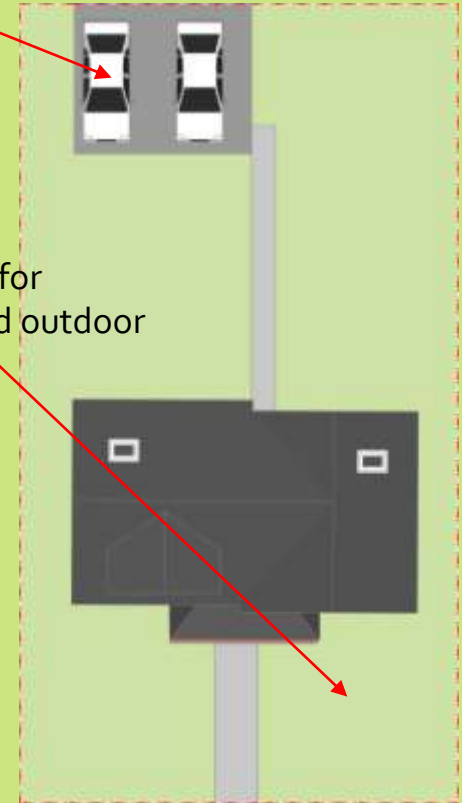


Residential Transition Housing: Duplex/Triplex

Locate parking in rear (via alley)

Entries accessible to street

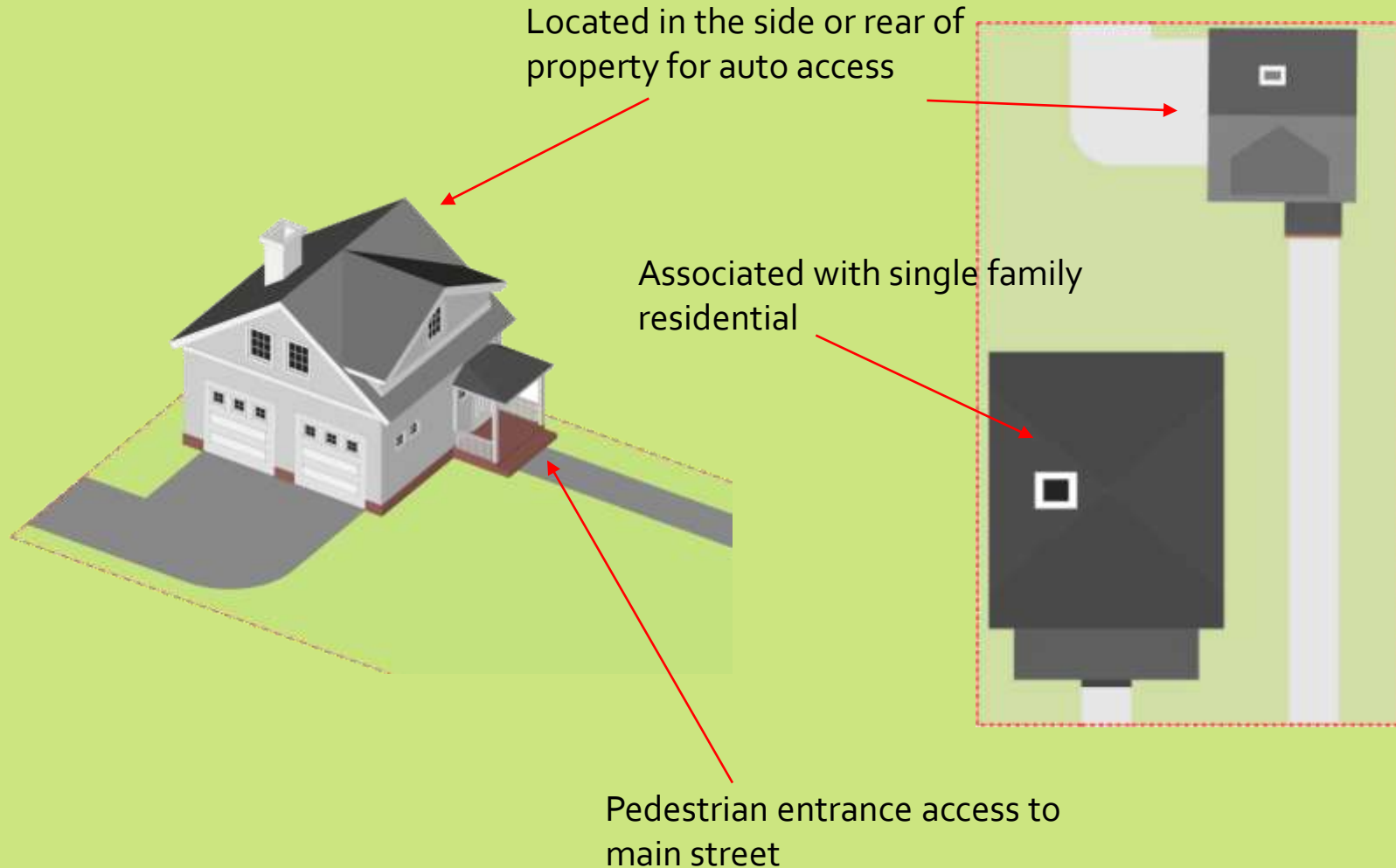
Opportunities for private / shared outdoor space



Residential Transition Housing: Carriage House



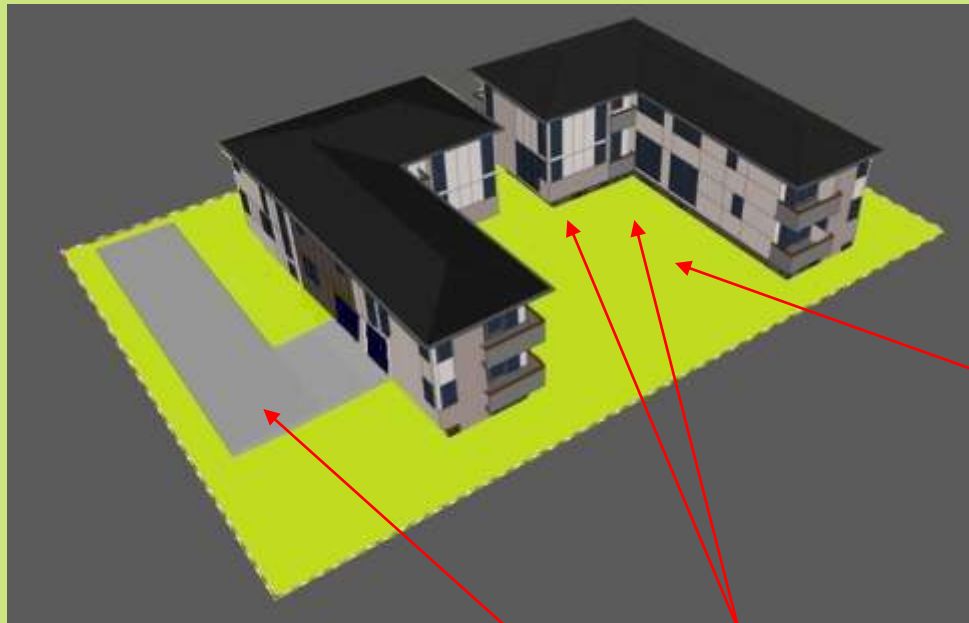
Residential Transition Housing: Carriage House



Residential Transition Housing: Garden Courtyard



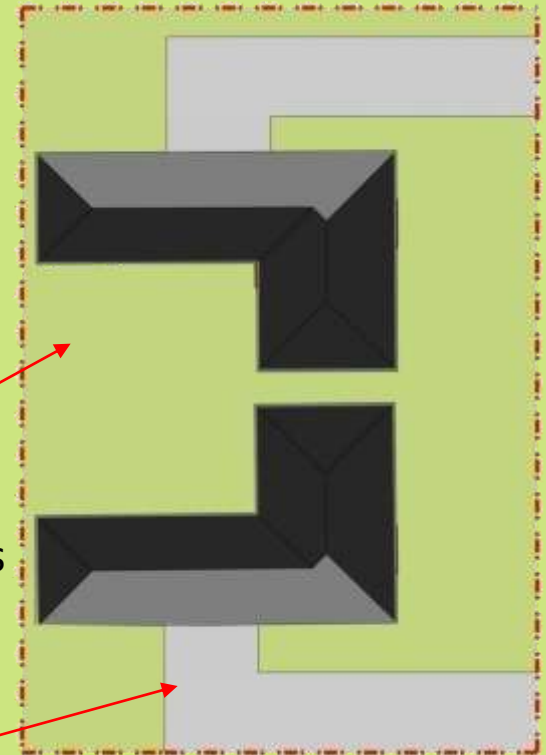
Residential Transition Housing: Garden Courtyard



Common
open spaces

Separate unit entries
facing courtyard

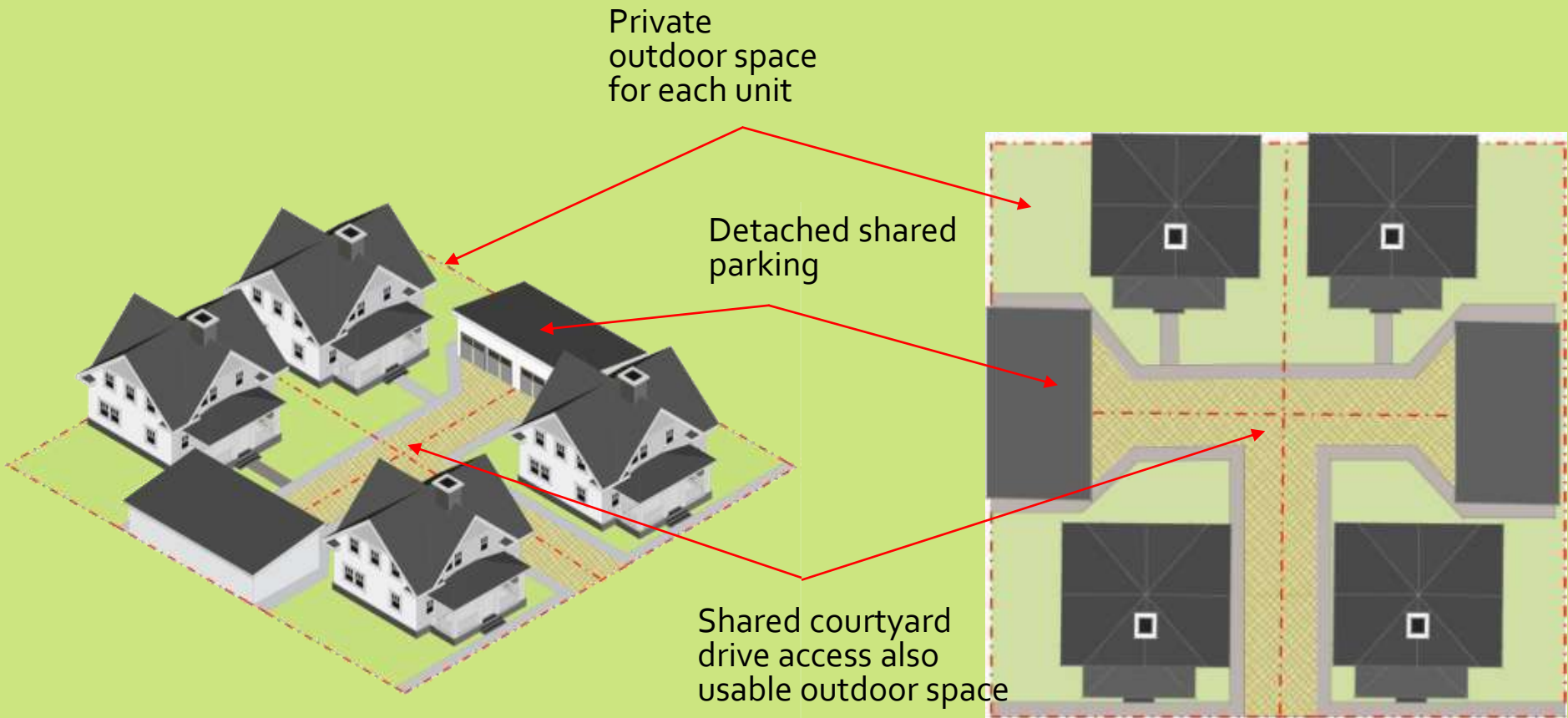
Vehicular entry from
rear/alley of lot



Residential Transition Housing: Shared Courtyard



Residential Transition Housing: Shared Courtyard

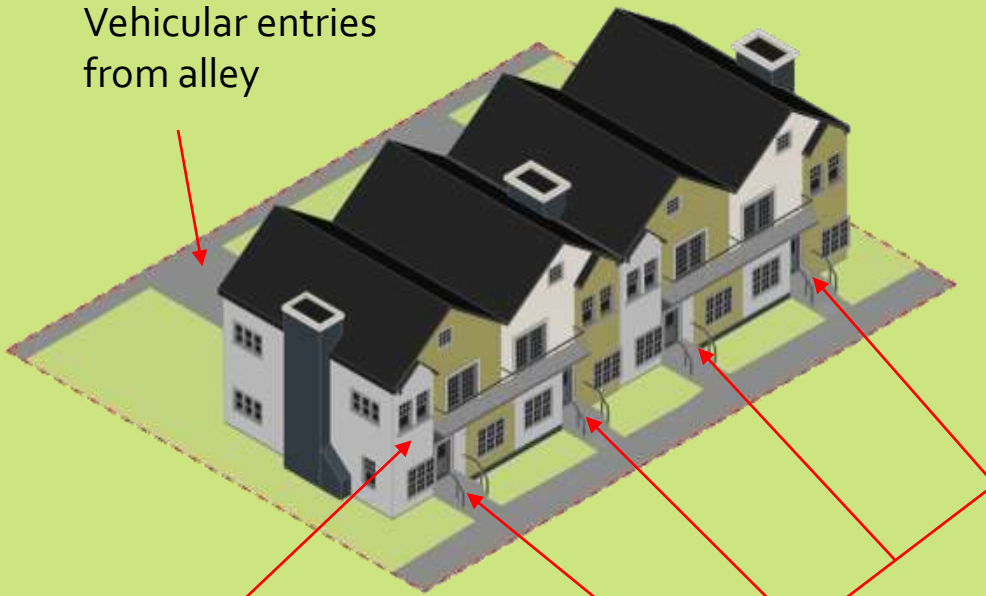


Residential Transition Housing: Townhouse



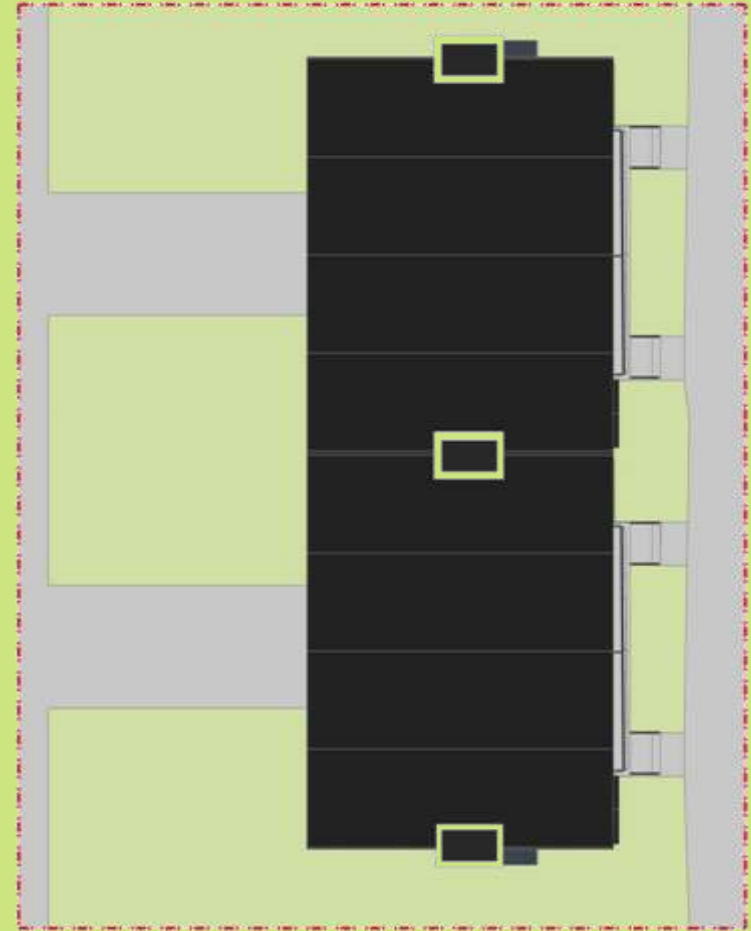
Residential Transition Housing: Townhouse

Vehicular entries
from alley



Architectural
modulation

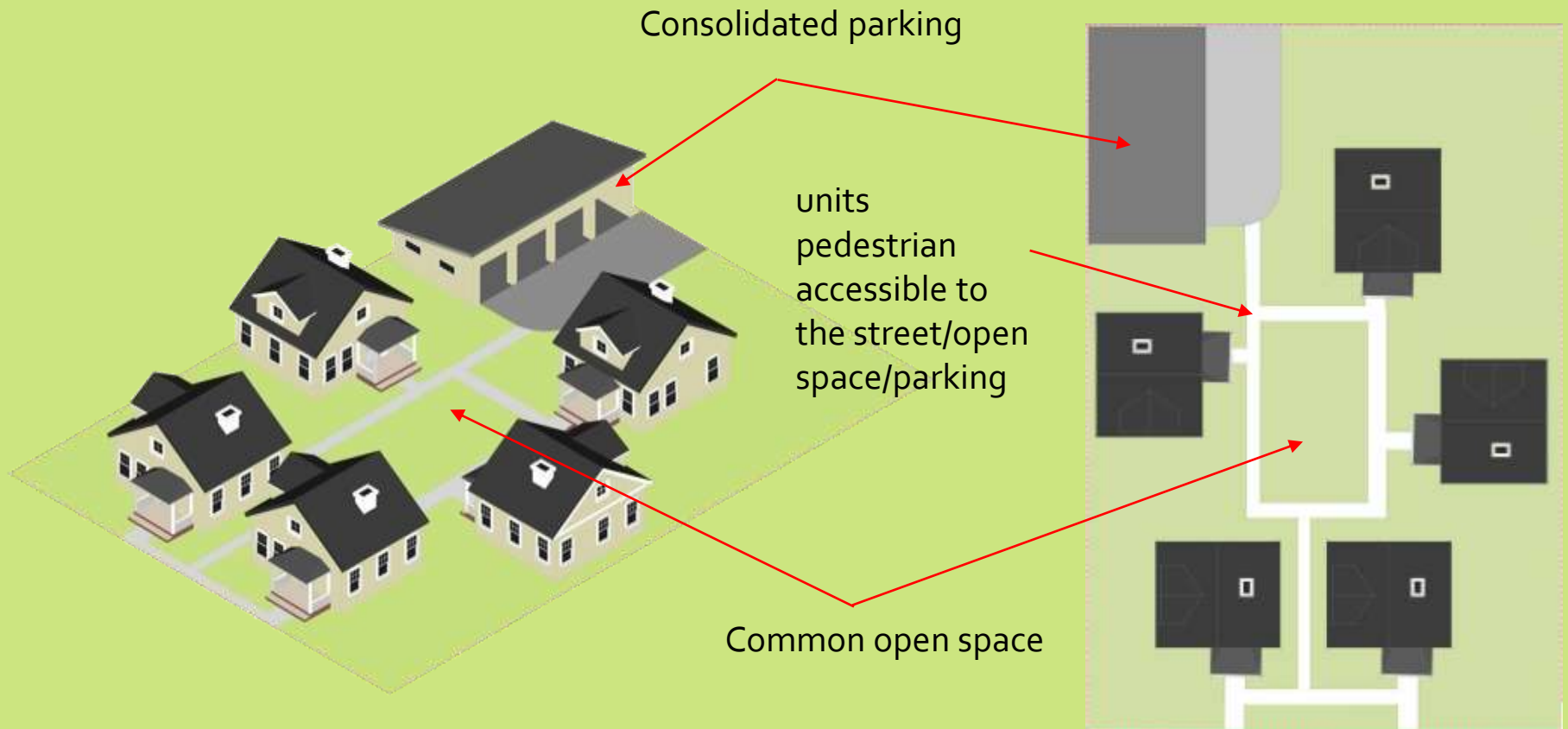
Individual
entries



Residential Transition Housing: Cottage



Residential Transition Housing: Cottage



EXERCISES

Ground Rules:

- **Be bold and creative – *all ideas are valid***
- Be considerate, polite and constructive
 - *We're all neighbors -- consider others' feelings*
- Take turns talking
- Remain calm and keep a sense of humor

Introduction

In your group:

- Introduce yourself
- Pick a “scribe”
- Pick a group “reporter”

Group Exercise: *Form and Function*

In your group, identify:

- What uses do you want to encourage that aren't there today?
- Where should the Commercial Core be located?
- Do opportunities exist to exceed today's height limit? Any design considerations?
- Where should the residential transition zones be?

(40 minutes)

Group Exercise Summaries

- Group reporter share *two findings* from each exercise

Next Meeting

- May 6 Input Summary
 Discussion of Alternatives

www.cob.org – Search “Fountain District Urban Village”

Katie Franks, Development Specialist II: email kfranks@cob.org

Any Last Comments?