

Fountain District Urban Village Public Input Workshops

Meeting #2

**Public Realm: Streets, Neighborhood Connections
& Public Places**

April 15th, 2009

City of Bellingham, Washington

Streets as Places – Key Attributes

Access and Linkages

Comfort & Image

Sociability

Uses and Activities



Street Character: Sidewalks



Street Character: Safety



Street Character: Trees and Plants



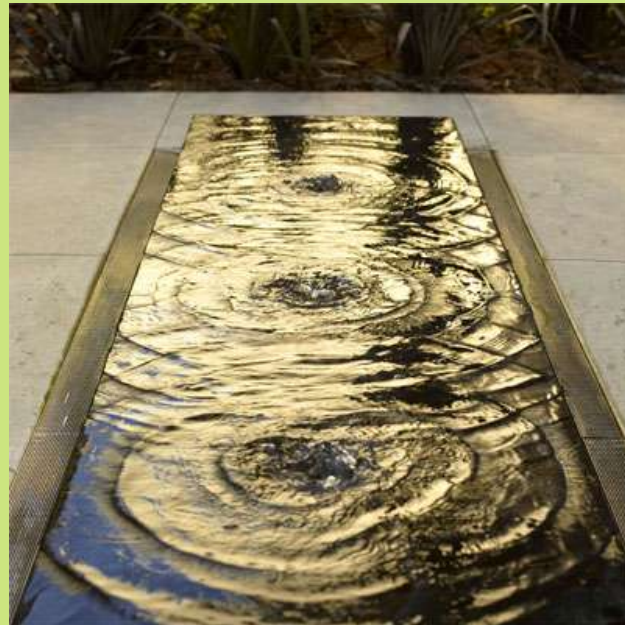
Street Character: Furniture



Street Character: Lighting and Signage



Street Character: Art/Water Features



Street Character: Parking



Street Character: Cleanliness

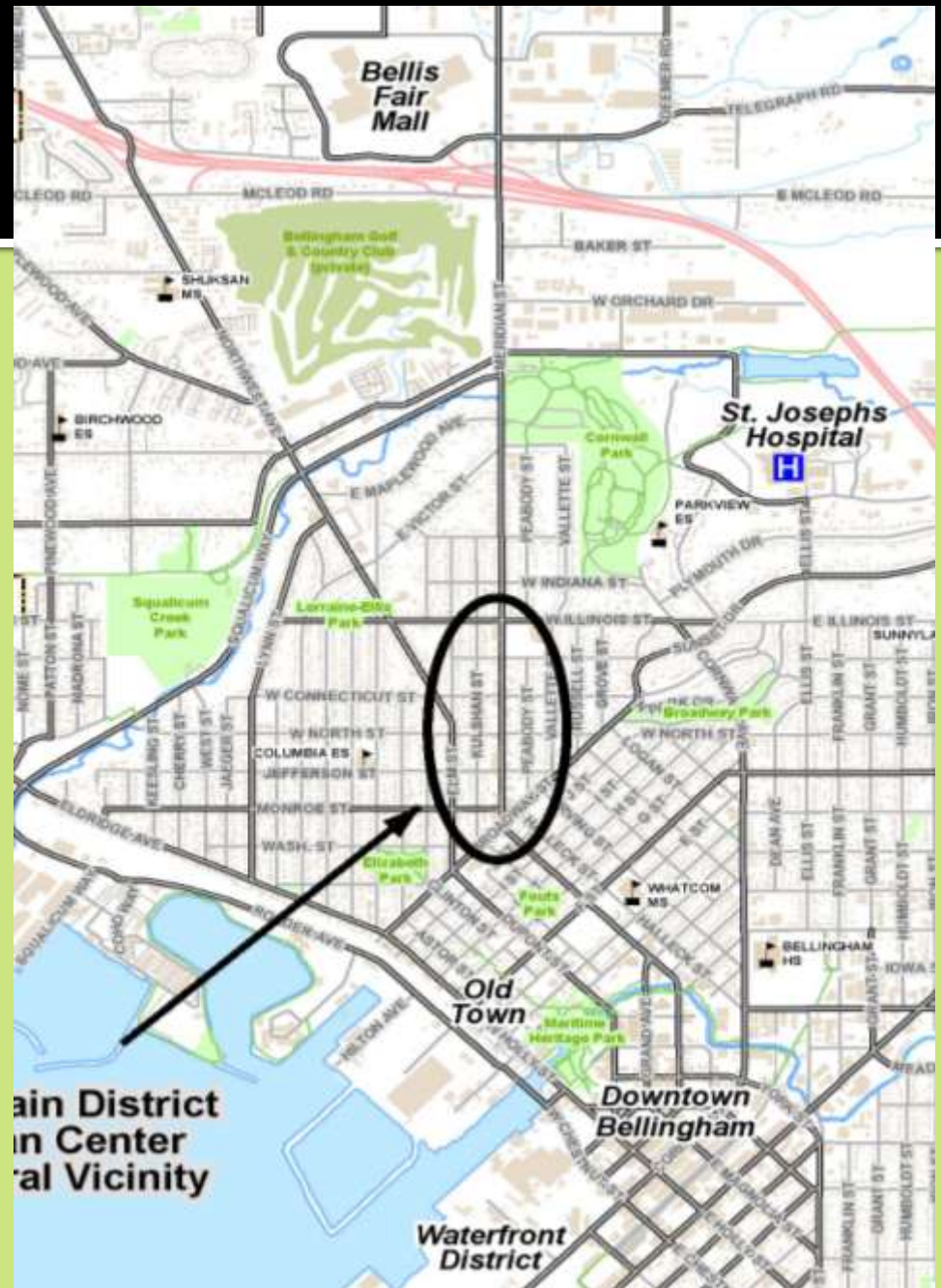
Street Character: Built Environment



Public Spaces

In and near the Fountain District:

- Parks
- Paths
- Plazas



Public Spaces: PARKS and PATHS



Elizabeth Park



Cornwall Park



Broadway Park

Public Spaces: PARKS and PATHS



Old Village Trail



Whatcom Creek Trail and Maritime Heritage Park

Public Spaces: PLAZAS

Plaza: *a town's public square; an open area used for gathering in a city, often having small trees and benches for sitting*



Public Spaces: Fountain Plaza Park

Jason Darling

ReSources Public Outreach Coordinator
and Lettered Streets Neighbor



- Prior to the City's advancement of the Fountain District Urban Village Master Planning Process in January 2009
- *Re-Sources'* Jason Darling had launched a public process to engage neighbors, business' and the general public in revitalization of Fountain Plaza Park (2007)

EXERCISES

Ground Rules:

- **Be bold and creative – *all ideas are valid***
- Be considerate, polite and constructive
 - Strive to be neighborly and consider others' feelings
- Take turns talking
- Remain calm and keep a sense of humor
- Don't run with scissors

Introduction

In your group

- Take a minute to introduce yourself and identify why you are here
- Pick a “scribe”
- Pick a “reporter” for your group that is not a staff person

Group Exercise #1

Neighborhood Routes & Connections

In your group, identify:

- Existing and potential pedestrian, bicycle, and transit connections and crossings
- What areas feel safe or unsafe, and why?
- What elements of the existing street character make you feel this way?

(20 minutes)

Group Exercise #2

Fountain Plaza Park: Public Space Opportunities

In your group, identify:

- How the plaza is currently being used, and what type of activities would you like to see in the future?
- What do you like best about the place? What do you like least?
- List three things that could be done to improve the plaza park that could be done right away and wouldn't cost a lot

Homework:

Fountain Plaza “place making”

Group Exercise Summaries

- Group reporter gives *top two findings* for each exercise

Next Meeting

- April 22 Development Character:
Permitted Uses, Design, Scale and
Neighborhood Transitions
- Homework Fountain Plaza “place making”

www.cob.org – Search “Fountain District Urban Village”

Katie Franks, Development Specialist II: email kfranks@cob.org

Concluding Comments

- Any last words?