



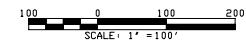
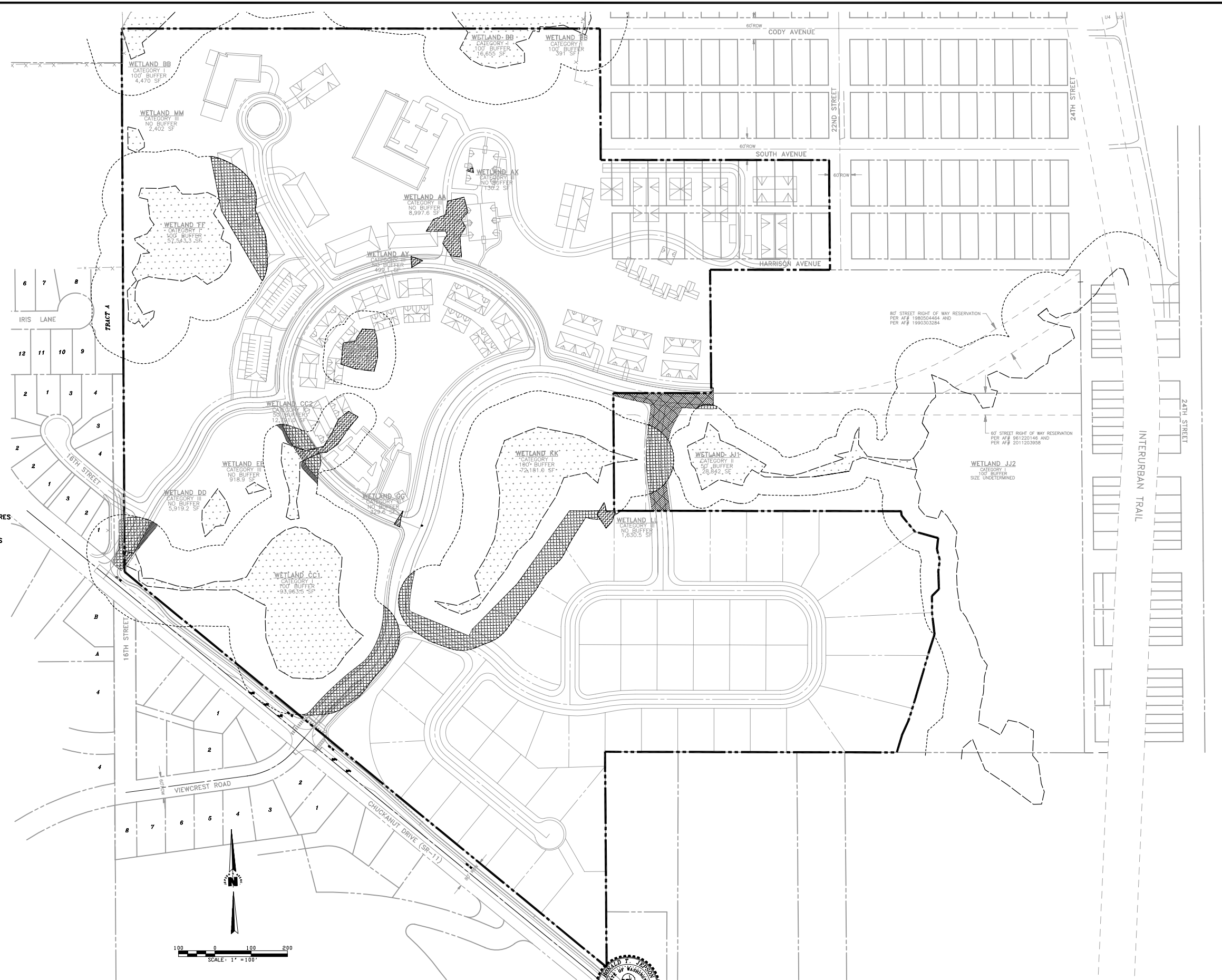


- WETLAND IMPACTS ALT 4F**
- 
WETLAND IMPACTS = 26,391 SF / 0.61 ACRES
REGULATED = 14,803 SF / 0.34 ACRES
 WETLAND CC1 557 SF / 0.01 ACRES
 WETLAND CC2 5479 SF / 0.13 ACRES
 WETLAND HH 8767 SF / 0.20 ACRES
NON-REGULATED = 11,588 SF / 0.23 ACRES
 WETLAND AA 8998 SF / 0.21 ACRES
 WETLAND AY 499 SF / 0.01 ACRES
 WETLAND AX 130 SF / 0.003 ACRES
 WETLAND GG 330 SF / 0.01 ACRES
 WETLAND LL 1631 SF / 0.037 ACRES
 - 
BUFFER IMPACTS = 107,838 SF / 2.48 ACRES
 - 
TEMPORARY BUFFER IMPACTS = 2,361 SF / 0.05 ACRES
 - 
OFFSITE FOREST IMPACTS = 16,331 SF / 0.37 ACRES



RONALD T. JEPSON & ASSOCIATES
 REGISTERED PROFESSIONAL ENGINEERS AND LAND SURVEYORS
 222 GRAND AVE., SUITE C, BELLINGHAM, WASHINGTON 98225 PH.(360)733-5760 FAX (360)647-8939

SCALE: 1" = 100'
 DESIGNED BY: B/W
 DRAWN BY: B/W
 CHECKED BY: B/W
 DATE: 8/10/2009

REVISIONS:



ALTERNATIVE 4F IMPACTS
 FAIRHAVEN HIGHLANDS (739 UNITS)
 CHUCKANUT DRIVE, FAIRHAVEN

CLIENT:
GREENBRIAR NORTHWEST, LLC

04127
4F-2

L:\Jepson Projects\2004\04127.dwg, EIS Alternatives\Parashis\Final Alternatives\ALT-04-F IMPACT.DWG - dkin - AUG 11, 2009 - 09:54:31