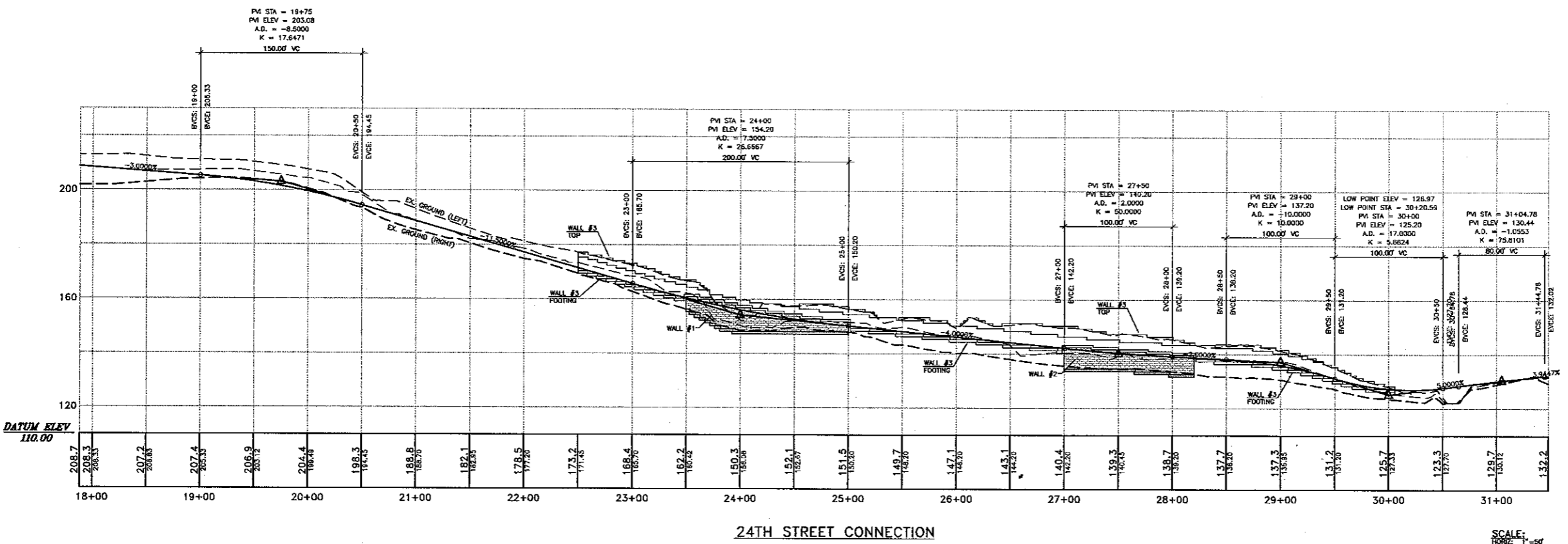
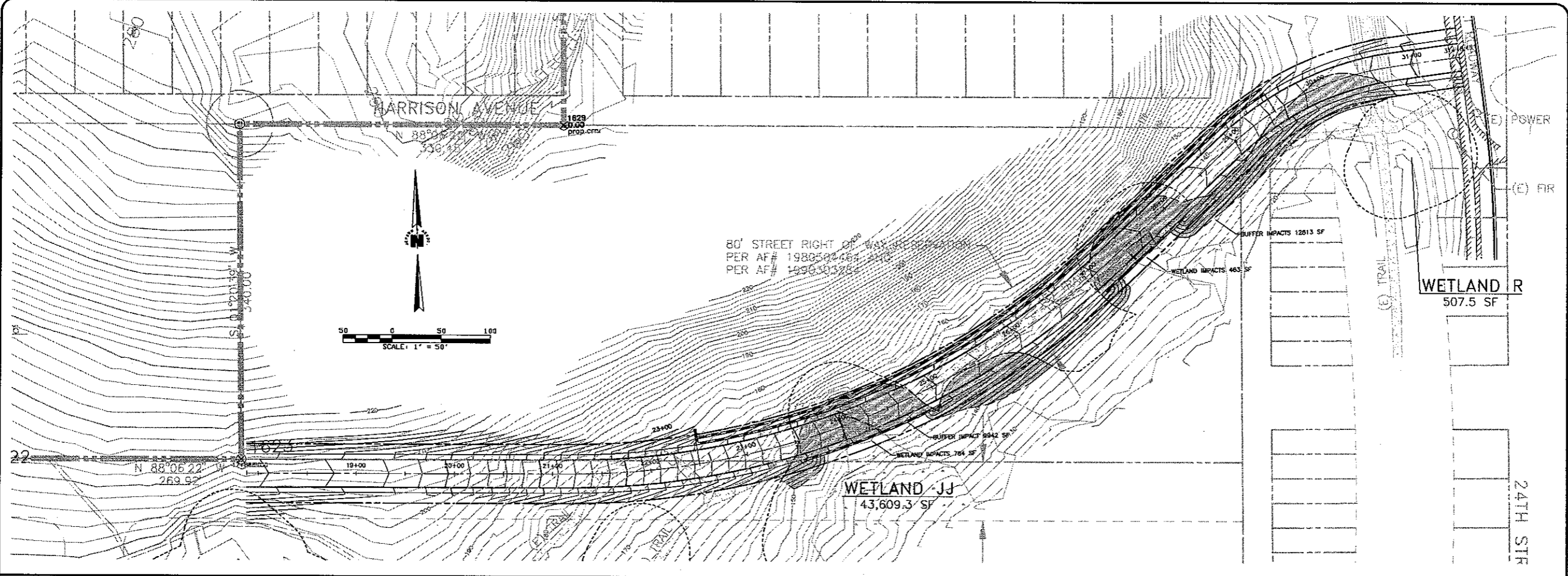
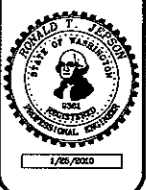


L:\Jepson Projects\2004\04127\Orig\EIS Alternatives\Brennets\P-LAY-24TH CONNECTOR.DWG - jbluebird - NOV 05, 2008 - 09:51:02
 THE USE OF THESE PLANS AND SPECIFICATIONS SHALL BE RESTRICTED TO THE ORIGINAL SITE FOR WHICH THEY WERE PREPARED AND NO ALTERATION, MODIFICATION, OR REVISIONS SHALL BE MADE WITHOUT THE WRITTEN APPROVAL OF THE ENGINEER OF RECORD.



SCALE:
 HORIZ: 1" = 50'
 VERT: 1" = 20'

REVISIONS	
DESIGNED BY	BJW
DRAWN BY	BJW
DATE	PRELIMINARY
ENGINEER	RONALD T. JEPSON
PROJ. NO.	9361



PRELIMINARY
 NOT FOR CONSTRUCTION

RONALD T. JEPSON & ASSOC.
 CIVIL ENGINEERING - SURVEYING - LAND PLANNING
 222 GRAND AVENUE, SUITE 200, BELLEVUE, WASHINGTON 98005
 360-733-5760 FAX 360-647-8838 WWW.RONALDTJEPSON.COM



PREPARED FOR: GREENBRIAR NORTHWEST
24TH STREET CONNECTOR ROAD
 FAIRHAVEN HIGHLANDS E.I.S.
 CHUCKANUT DRIVE
 COUNTY OF WHATCOM, WASHINGTON

SCALE:	AS SHOWN
DATE:	9/8/2008
SHEET:	C-1
NO.	04127