

Project:  
**No. 0742**  
**9th and Harris**  
Fairhaven Harbor Condominiums  
Fairhaven, Washington

Drawing:  
**EAST ELEVATION**

SUBMISSION:

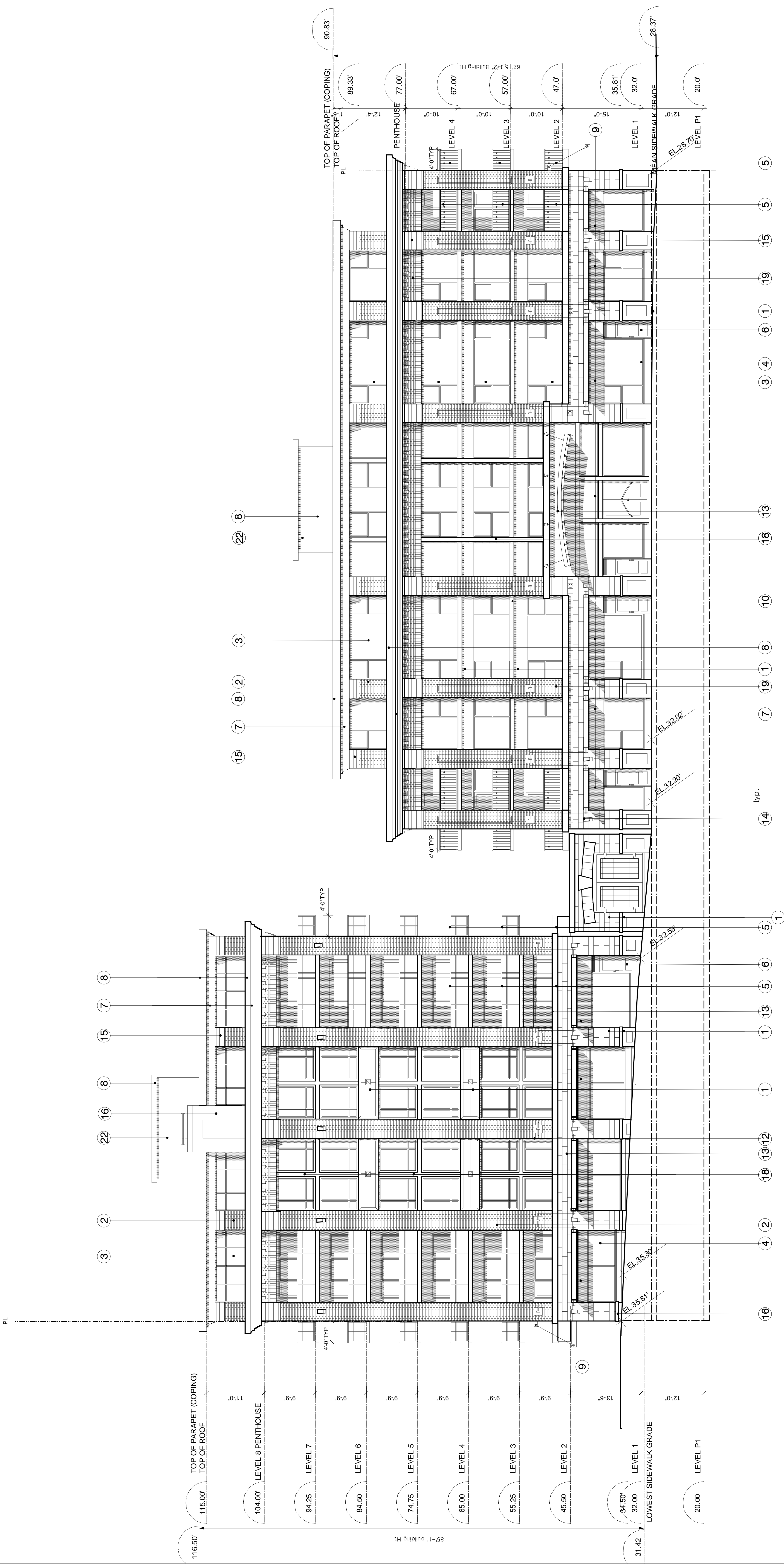
No.	Date	Note
1	2007-09-13	For Design Review
2	2007-10-17	For Design Review
3		
4		
5		
6		

REVISIONS:

No.	Date	Note
1		
2		

All Drawings in this set to be read in conjunction with each other. Any errors or discrepancies to be reported to the Architect before commencing work.  
Contractors are responsible to ensure that all work is executed to the requirements of the appropriate Building Code Authority.  
© Copyright Ankenman Marchand Architects. All rights reserved.

Scale: Date: DRWG. NO:  
1/8"=1'-0" 2007-10-17  
Drawn: Checked:  
J.McD. T.A.  
**A-3.01**



Ninth Street

**MATERIALS LEGEND**

- 1 EXPOSED COLORED, ARCHITECTURAL CONCRETE, (SANDSTONE-LIKE COLOR + FINISH)
- 2 BRICK VENEER, DARK RED SMOOTH TITAN
- 3 DBL. GLAZED ALUMINIUM RESIDENTIAL WINDOWS
- 4 DBL. GLAZED ALUMINIUM STOREFRONT WINDOWS
- 5 PRE-FINISHED ALUMINIUM GUARDS
- 6 CLEAR FIR ENTRY DOORS
- 7 STUCCO PROFILE CORNICE
- 8 PRE-FINISHED ALUMINIUM FLASHINGS
- 9 SPANDREL SIGN PANELS
- 10 PAINTED HSS
- 11 PRECAST CONCRETE OR STUCCO C/W/ REVEALS
- 12 PAINTED STEEL SUPPORT RODS C/W/ EXCEED SUPPORT BRACKETS
- 13 PAINTED STEEL CANOPY C/W TRANSLUCENT GLASS OVER
- 14 WALL MOUNTED LIGHTING (UP & DOWN LIGHTS)
- 15 TAPERED BRICK SUPPORT DETAIL
- 16 MASONRY FINISH - SANDSTONE, LIGHT TEXTURE & FINISH
- 17 SANDSTONE-LIKE COPING STONE
- 18 "C" CHANNEL PTD STEEL
- 19 BRICK VENEER, LIGHT RED SMOOTH TITAN
- 20 BRICK VENEER, TAN TERRA
- 21 HARDIPANEL-CREAM

1 EAST ELEVATION  
A-3.01  
SCALE 1/8" = 1'-0"