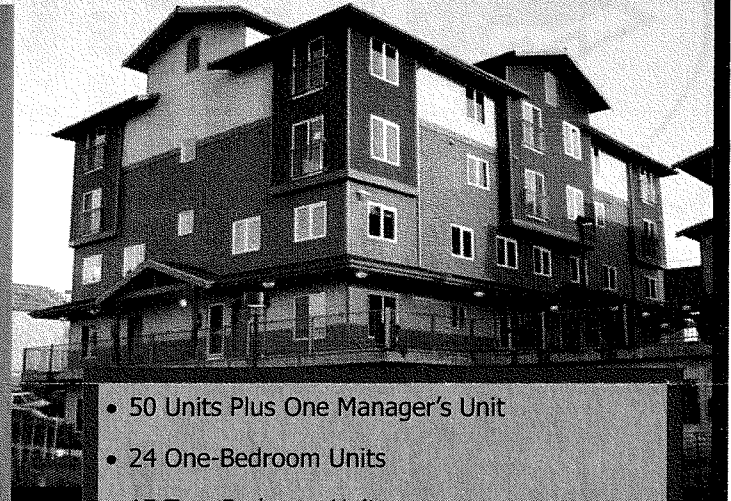


Laurel Village Apartments Grand Opening!

\$ 10 million
total

The Bellingham Housing Authority is pleased to present its latest affordable housing development. Laurel Village is an attractive series of three buildings connected by intertwining courtyards and located on a quiet side street at the edge of Bellingham's city center. Family-friendly features include a community room and an underground parking garage. Adjacent to bike and pedestrian paths, Laurel Village is within walking distance of a waterfront city park, and many units have a view of Bellingham Bay. Durable materials and green construction were used wherever possible.

The Authority has set aside ten of the complex's fifty units for formerly homeless families. The Authority worked in a cooperative effort with Lydia Place, a non-profit agency providing supportive housing for homeless families in our community, to select the families who will live in these ten units. Teresa Josephson, Executive Director of Lydia Place, said "These families are thrilled to have a home, particularly in such a new and beautiful setting."



- 50 Units Plus One Manager's Unit
- 24 One-Bedroom Units
- 15 Two-Bedroom Units
- 12 Three-Bedroom Units
- Community Space
- Underground Parking Garage
- Key Partners:

Beacon Development Group

City of Bellingham

Ebenal General Contractors

Enterprise Equity Investment

Pinnacle Realty Management

State Department of Community, Trade and Economic Development

Washington Community Reinvestment Association

Washington State Housing Finance Commission

Wells Fargo Bank

Zervas Group Architects



Please join us in the celebration
on February 22nd,
12:00pm-2:00pm.

Opening ceremony begins at
12:30pm.

A light lunch and facility tours
will be provided.



\$ 10 M / +/- 92 bdrms. = +/- 108,700 per
bedroom