

**Scene layers**

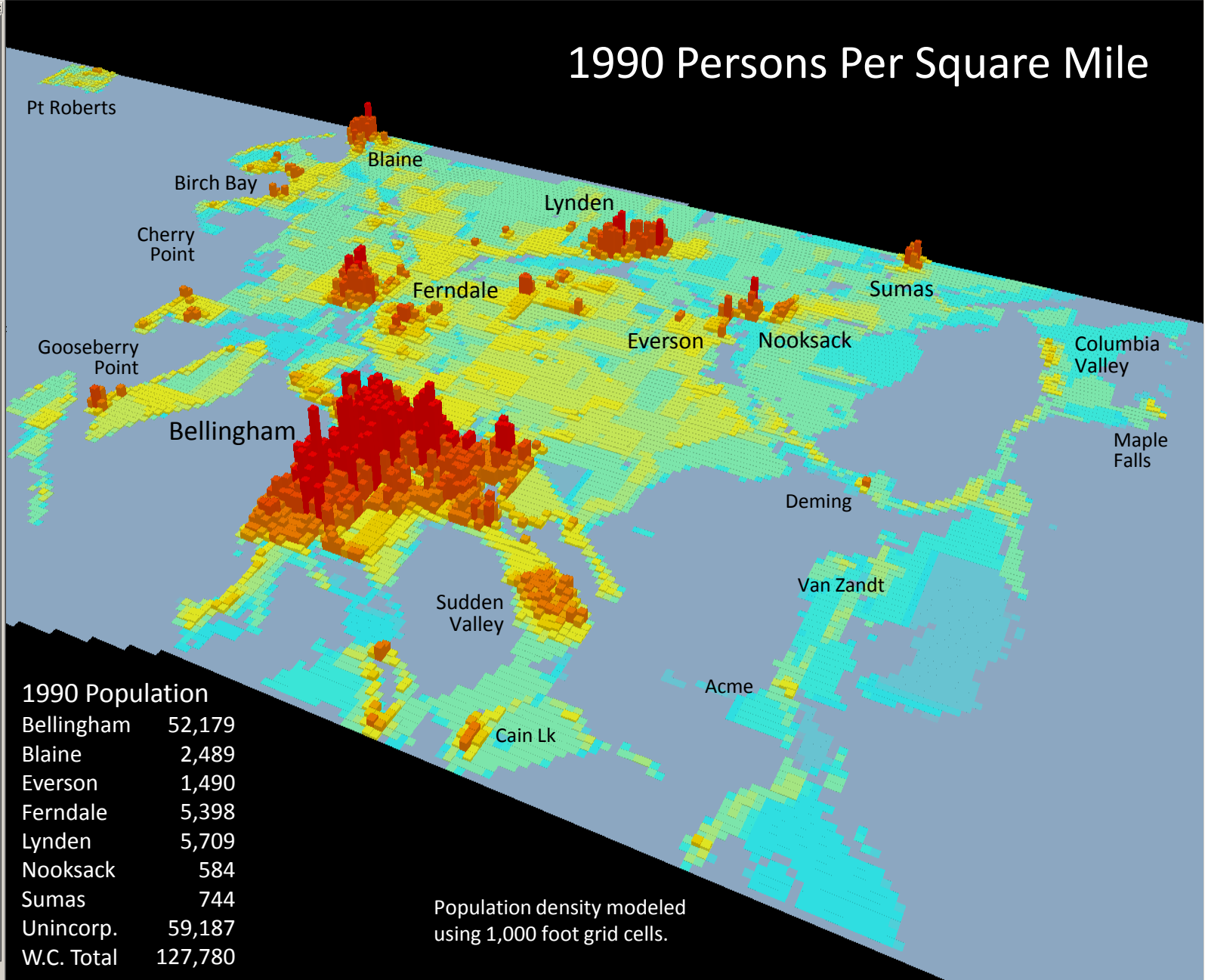
- Urban Growth Areas
- Population Density
  - US Census 2010
  - US Census 2000
  - US Census 1990

Population 1990 / Sq. Miles

- 0.00 - 1.00
- 1.01 - 2.00
- 2.01 - 5.00
- 5.01 - 10.00
- 10.01 - 20.00
- 20.01 - 35.00
- 35.01 - 75.00
- 75.01 - 125.00
- 125.01 - 200.00
- 200.01 - 500.00
- 500.01 - 750.00
- 750.01 - 1,000.00
- 1,000.01 - 2,500.00
- 2,500.01 - 5,000.00
- 5,000.01 - 13,934.62

TopoRaster

# 1990 Persons Per Square Mile



**1990 Population**

Bellingham	52,179
Blaine	2,489
Everson	1,490
Ferndale	5,398
Lynden	5,709
Nooksack	584
Sumas	744
Unincorp.	59,187
<b>W.C. Total</b>	<b>127,780</b>

Population density modeled using 1,000 foot grid cells.

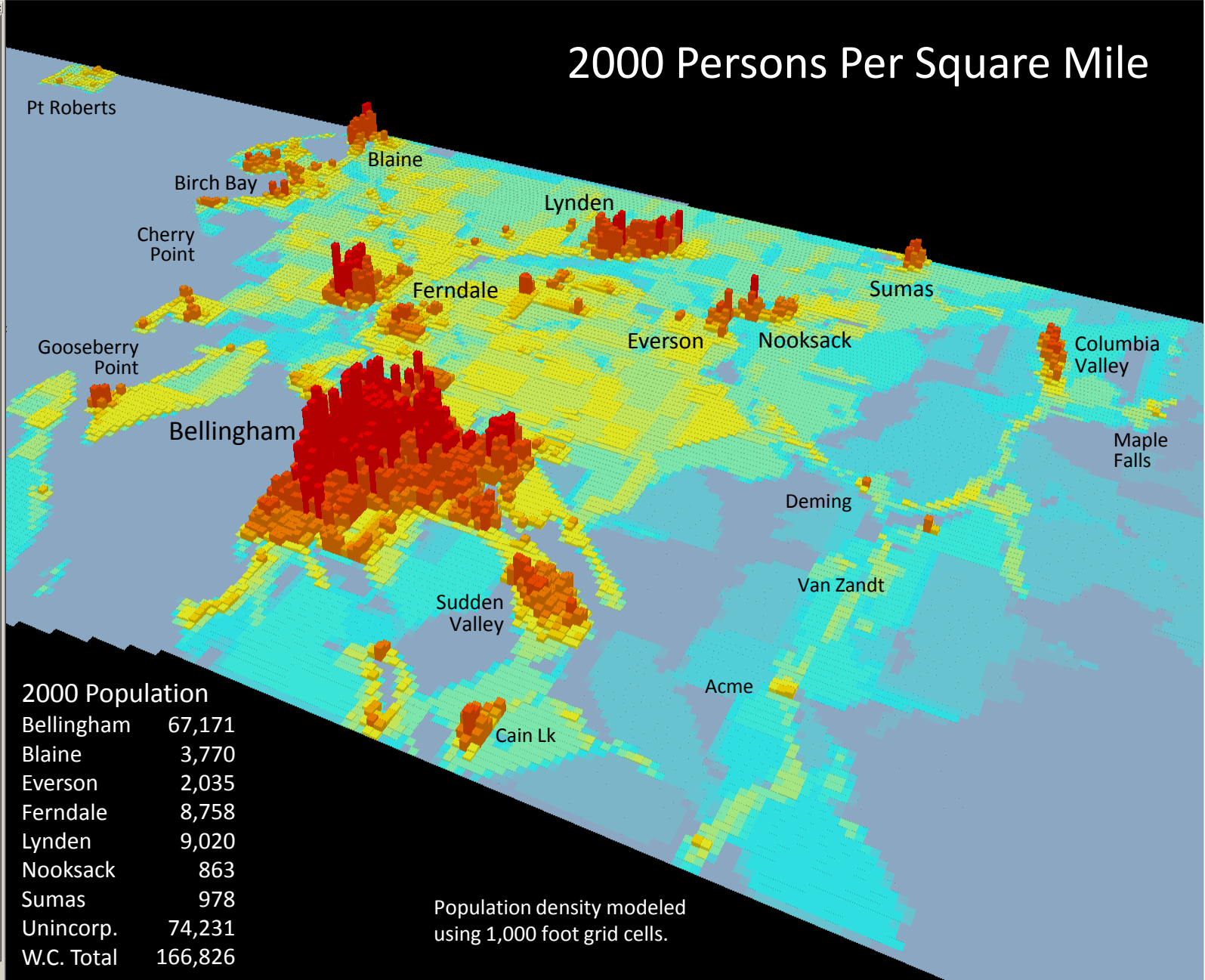
**Scene layers**

- Urban Growth Areas
- Population Density
  - US Census 2010
  - US Census 2000
- US Census 1990
- TopoRaster

Population 2000 / Sq. Miles

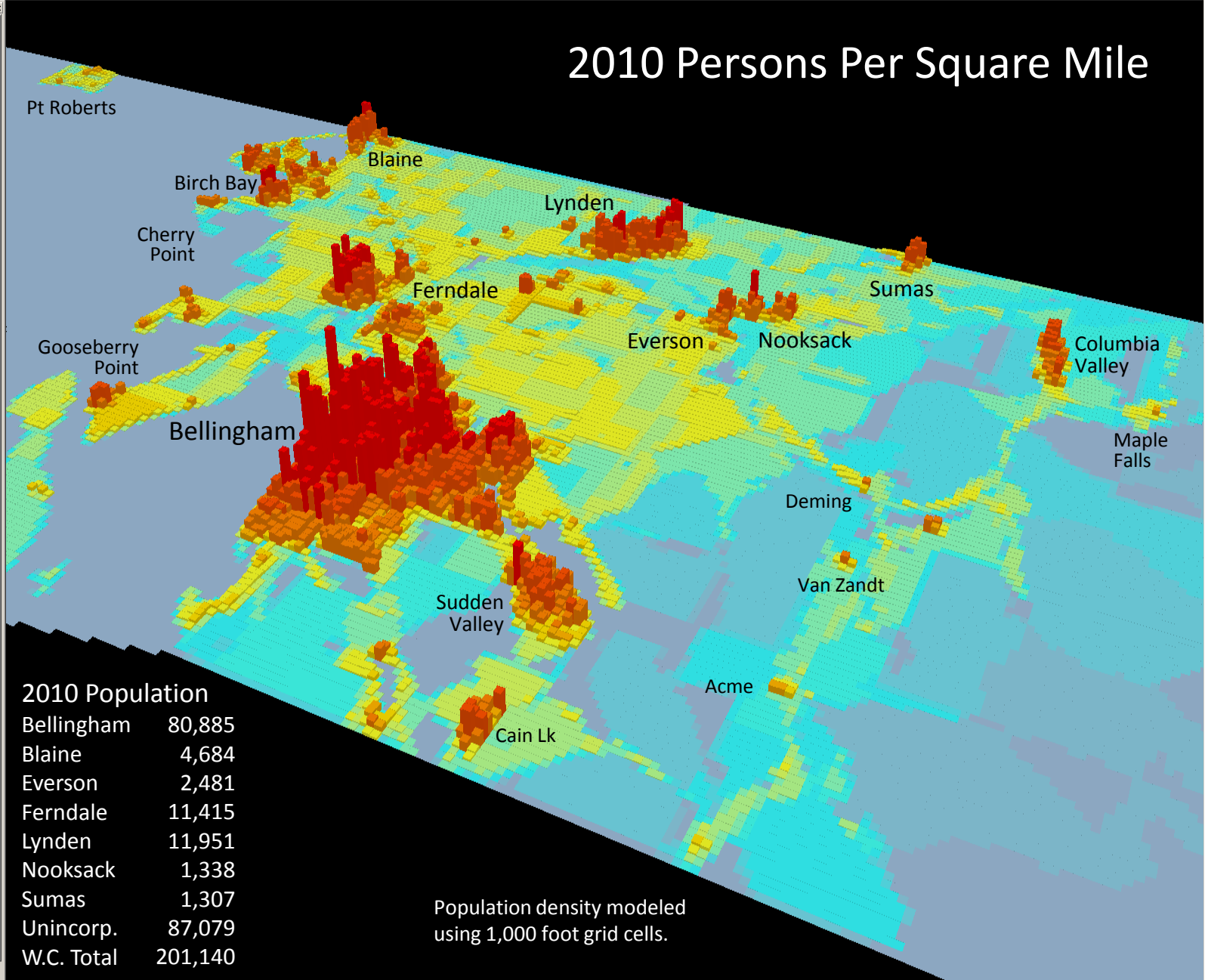
- 0.00 - 1.00
- 1.01 - 2.00
- 2.01 - 5.00
- 5.01 - 10.00
- 10.01 - 20.00
- 20.01 - 35.00
- 35.01 - 75.00
- 75.01 - 125.00
- 125.01 - 200.00
- 200.01 - 500.00
- 500.01 - 750.00
- 750.01 - 1,000.00
- 1,000.01 - 2,500.00
- 2,500.01 - 5,000.00
- 5,000.01 - 16,169.70

Display Source



**Scene layers**

- Urban Growth Areas
- Population Density
  - US Census 2010
    - Population 2010 / Sq. Miles
    - 0.00 - 1.00
    - 1.01 - 2.00
    - 2.01 - 5.00
    - 5.01 - 10.00
    - 10.01 - 20.00
    - 20.01 - 35.00
    - 35.01 - 75.00
    - 75.01 - 125.00
    - 125.01 - 200.00
    - 200.01 - 500.00
    - 500.01 - 750.00
    - 750.01 - 1,000.00
    - 1,000.01 - 2,500.00
    - 2,500.01 - 5,000.00
    - 5,000.01 - 20,163.75
  - US Census 2000
  - US Census 1990
  - TopoRaster



**2010 Population**

Bellingham	80,885
Blaine	4,684
Everson	2,481
Ferndale	11,415
Lynden	11,951
Nooksack	1,338
Sumas	1,307
Unincorp.	87,079
<b>W.C. Total</b>	<b>201,140</b>

Population density modeled using 1,000 foot grid cells.

**Scene layers**

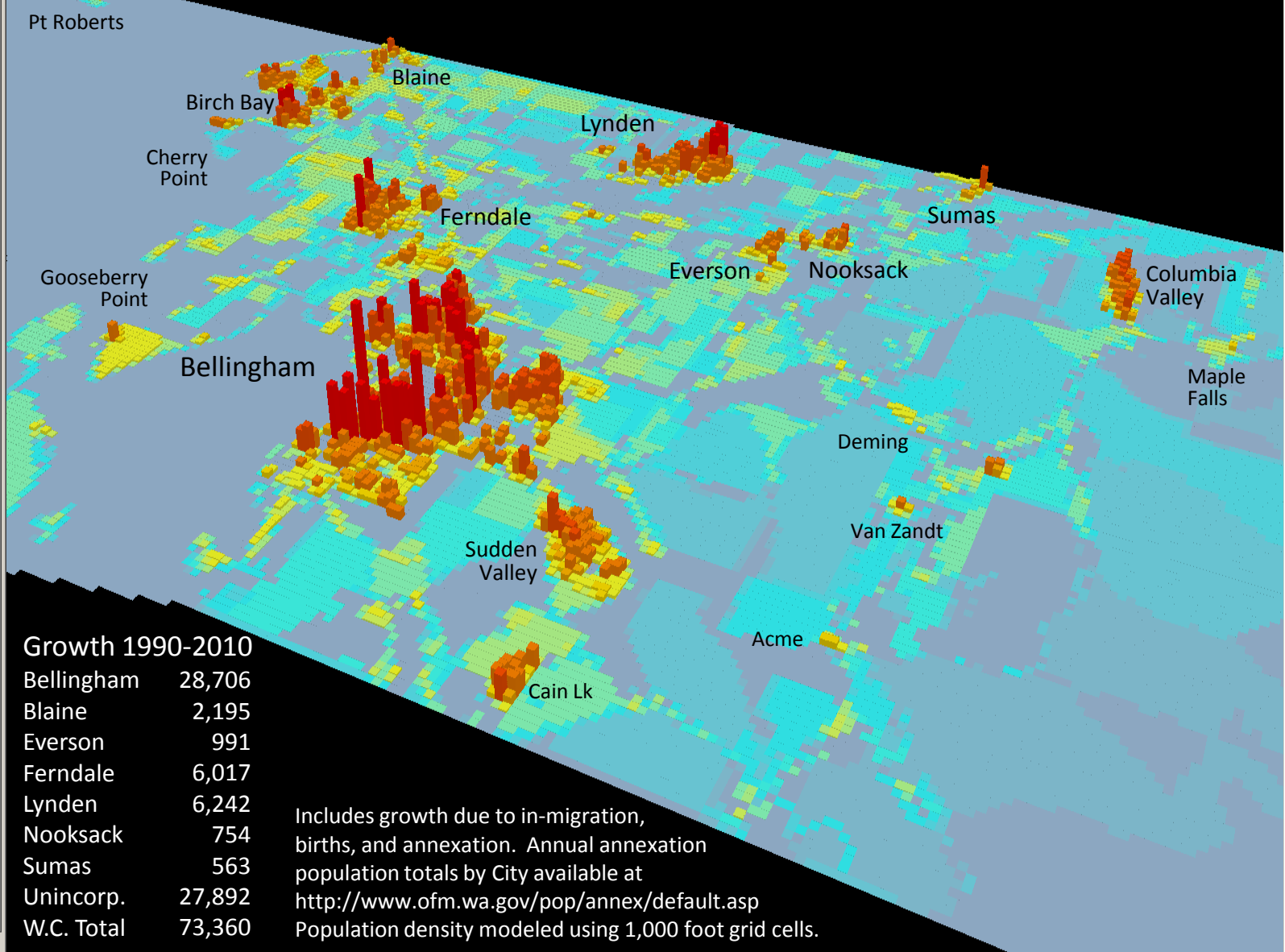
- Urban Growth Areas
- Population Density
- Population Growth 1990 to 2010  
(2010 - 1990) / Sq. Miles
- TopoRaster

Legend for Population Growth 1990 to 2010:

- 189.56 - 1.00
- 1.01 - 2.00
- 2.01 - 5.00
- 5.01 - 10.00
- 10.01 - 20.00
- 20.01 - 35.00
- 35.01 - 75.00
- 75.01 - 125.00
- 125.01 - 200.00
- 200.01 - 500.00
- 500.01 - 750.00
- 750.01 - 1,000.00
- 1,000.01 - 2,500.00
- 2,500.01 - 5,000.00
- 5,000.01 - 15,089.19

Buttons: Display Source

# Net Population Growth 1990 - 2010



**Growth 1990-2010**

Bellingham	28,706
Blaine	2,195
Everson	991
Ferndale	6,017
Lynden	6,242
Nooksack	754
Sumas	563
Unincorp.	27,892
W.C. Total	73,360

Includes growth due to in-migration, births, and annexation. Annual annexation population totals by City available at <http://www.ofm.wa.gov/pop/annex/default.asp>  
Population density modeled using 1,000 foot grid cells.

**Scene layers**

- Urban Growth Areas
- Population Density
- Population Growth 1990 to 2010  
(2010 - 1990) / Sq. Miles
- TopoRaster

Legend for Population Growth 1990 to 2010 (2010 - 1990) / Sq. Miles:

- 189.56 - 1.00
- 1.01 - 2.00
- 2.01 - 5.00
- 5.01 - 10.00
- 10.01 - 20.00
- 20.01 - 35.00
- 35.01 - 75.00
- 75.01 - 125.00
- 125.01 - 200.00
- 200.01 - 500.00
- 500.01 - 750.00
- 750.01 - 1,000.00
- 1,000.01 - 2,500.00
- 2,500.01 - 5,000.00
- 5,000.01 - 15,089.19

Display Source

# Net Population Growth 1990 - 2010 With Urban Growth Areas

