

WHATCOM FALLS PARK TRAILS and WHATCOM CREEK TRAIL (EAST)

TRAIL DESCRIPTION

Rolling, gravel trails along the creek with some steep grades and stairs.

TRAILHEADS

See map for parking.

Several walk-in Park entrances:

- Woburn St. at Yew St./Iowa St.
- Woburn St. at Fraser St.
- Electric Ave. at Kansas Ave.
- Electric Ave. at Flynn St.
- Iowa Dr. at Erie St.

MILEAGE

- See map

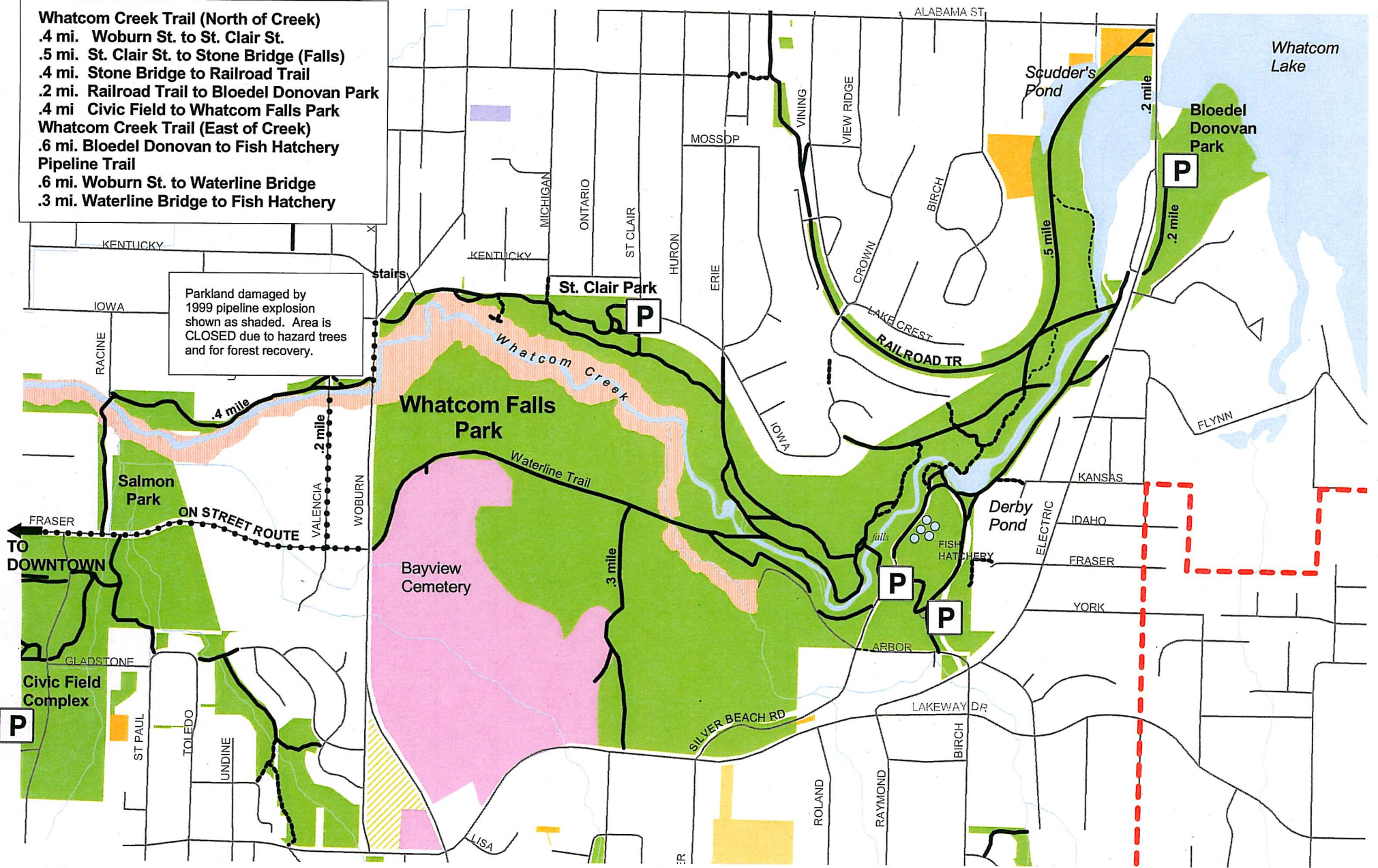
Whatcom Falls Park is a community park established in 1908. Facilities include two picnic shelters, playgrounds, multi-purpose fields, a basketball court, tennis courts, barbecues, picnic tables, restrooms, trails, interpretive displays, a fish hatchery and parking. Whatcom Creek Gorge provides dramatic waterfall views and sounds. The stone bridge is an excellent waterfall viewing spot. Educational signage about local fish is located at the Fish Hatchery.

A brochure detailing Whatcom Falls Park history and points of interest is available at the Cornwall Park office.

Bloedel Donovan Park is a community park established in 1946. Facilities include a community building, a pavilion, a preschool, playground, a swimming area and beach, parking, restrooms, trails, a basketball court, sand volleyball courts, multi-purpose field, a boat launch, picnic tables and barbecues. Located on impressive Lake Whatcom, it is a favorite beach hang-out in the summer.

- Whatcom Creek Trail (North of Creek)
 - .4 mi. Woburn St. to St. Clair St.
 - .5 mi. St. Clair St. to Stone Bridge (Falls)
 - .4 mi. Stone Bridge to Railroad Trail
 - .2 mi. Railroad Trail to Bloedel Donovan Park
 - .4 mi. Civic Field to Whatcom Falls Park
- Whatcom Creek Trail (East of Creek)
 - .6 mi. Bloedel Donovan to Fish Hatchery
 - .6 mi. Woburn St. to Waterline Bridge
 - .3 mi. Waterline Bridge to Fish Hatchery

Parkland damaged by 1999 pipeline explosion shown as shaded. Area is CLOSED due to hazard trees and for forest recovery.



not to scale

- Primary Trail (6'-12' wide)
- Secondary Trail (2'-4' wide)
- Minor Trails (1'-1 1/2' wide)

**WHATCOM FALLS PARK AND
WHATCOM CREEK TRAIL (EAST) MAP**
 City of Bellingham - Parks & Recreation
 3424 Meridian St., Bellingham, WA 98225

