



DESIGN STANDARDS FOR: LOUVERS AND VENTS

Ceiling Mounted Fan Standard:

1. WhisperCeiling model #FV-08VQ2 90 CFM – 4” duct manufactured by Panasonic.
2. Note: An approved equal will not be accepted. Sole source justification is based on bulk parts on hand; ease on maintenance time, availability, and vandal resistance.

WhisperCeiling™

VENTILATION FAN

FV-05VQ2

60 CFM-4" Duct

FV-07VQ2

70 CFM-4" Duct

FV-08VQ2

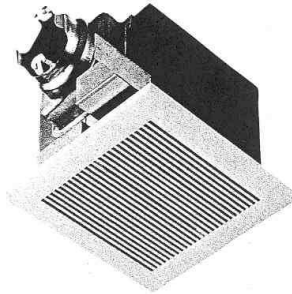
90 CFM-4" Duct

FV-11VQ2

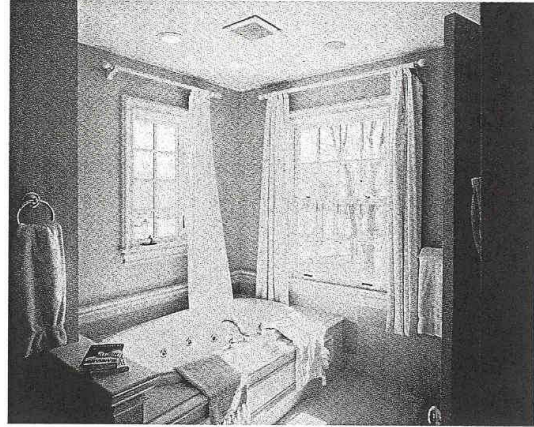
110 CFM-4" Duct

FV-11VQD2

110/60 CFM-4" Duct



Ceiling Mounted Fan



Advantages:

- Super quiet operation
- ENERGY STAR® qualified
- Totally enclosed condenser motor for long life—rated for continuous run
- Easy installation (double hanger bar system)
- Rust proof paint treatment on galvanized housing
- Built-in damper to prevent backdraft
- Contemporary grille design
- UL listed for tub/shower enclosure when used with a GFCI branch circuit wire
- Thermal fuse protection
- Meets Washington State Ventilation and Indoor Air Quality Code

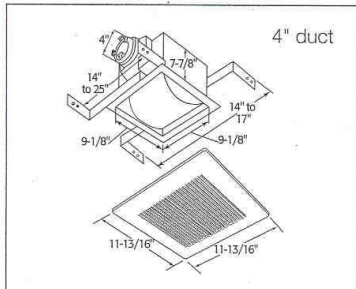
WhisperCeiling		FV-05VQ2		FV-07VQ2		FV-08VQ2		FV-11VQ2		FV-11VQD2 2-speed			
										High	Low		
Characteristics (HVI Certified Data for 0.1" S.P.)	Static pressure in inches w.g.	0.1	0.25	0.1	0.25	0.1	0.25	0.1	0.25	0.1	0.25	0.1	0.25
	Air Volume (CFM)	60	44	70	54	90	75	110	94	110	91	60	51
	Noise (sones)	<0.3	N/A	0.3	N/A	0.7	N/A	1.5	N/A	1.5	N/A	<0.3	N/A
	Power Consumption (Watts)	14	13	19	18	21	20	27	26	27	25	18	17
	Energy Efficiency (CFM/Watt)	4.3	3.4	3.7	3.1	4.3	3.8	4.1	3.6	4.1	3.6	3.3	3.0
	ENERGY STAR Qualified	Yes		Yes		Yes		Yes		Yes		Yes	
	Duct Diameter (inches)	4		4		4		4		4		4	
Approved Code/Standard/Regulation	UL Tub/Shower Enclosure	Yes		Yes		Yes		Yes		Yes		Yes	
	Washington State VIAQ Code	Yes		Yes		Yes		Yes		Yes		Yes	
	Mfg in ISO 9001 Certified Facility	Yes		Yes		Yes		Yes		Yes		Yes	

Complete Specification on page 38.
Performance Curve Charts on page 30.

N/A=not applicable
w.g.=water gauge
S.P.=static pressure

Panasonic ventilation fans may qualify for an energy saving rebate. Rebate programs are often provided by local utility companies and based on ENERGY STAR guidelines. Check with your local utility company for details.

Dimensions



END OF SECTION