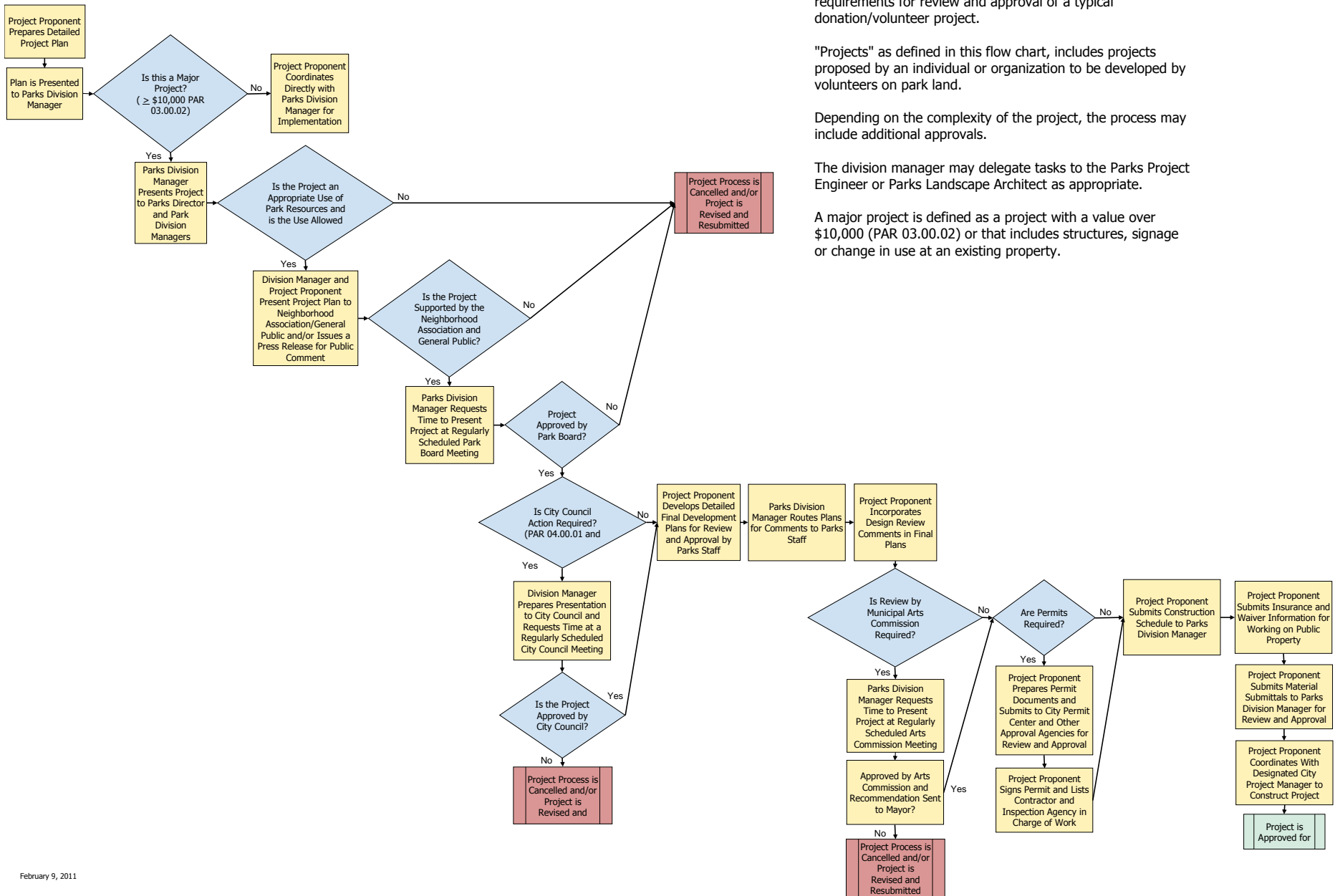


# Flow Chart for Review of Donation Projects on Park Land

## Design Standard No. 00000.07



### Notes:

The process included in this flow chart outlines the general requirements for review and approval of a typical donation/volunteer project.

"Projects" as defined in this flow chart, includes projects proposed by an individual or organization to be developed by volunteers on park land.

Depending on the complexity of the project, the process may include additional approvals.

The division manager may delegate tasks to the Parks Project Engineer or Parks Landscape Architect as appropriate.

A major project is defined as a project with a value over \$10,000 (PAR 03.00.02) or that includes structures, signage or change in use at an existing property.