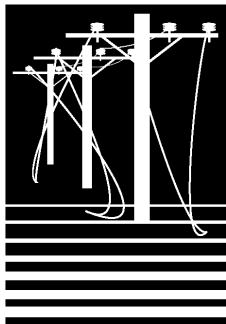


Downed Power Lines

Downed power lines are extremely dangerous and should be avoided. The following information is important to know should you encounter a downed power line. Keep a copy of this information sheet in your vehicle.



City of Bellingham
Office of Emergency
Management
1800 Broadway,
Bellingham 98225
360-778-8440
www.cob.org



Whatcom County
Division of Emergency
Management
311 Grand Ave,
Bellingham, WA 98225
360-676-6681
Incident Hotline: 360-
738-4551
<http://www.co.whatcom.wa.us/dem/events/events.jsp>



Whatcom County
Health Department
509 Girard Street
Bellingham, WA 98225
360-676-6724



PO Box 47890
Olympia, WA 98504-
7890
360-236-4027
(800) 525-0127
www.doh.wa.gov

Encountering a Downed Power Line

- If you come across a downed line, keep as far away from it as you can.
- Never touch a downed line or anything near it.
- Assume any downed line is an energized power line.

If a Power Line Touches Your Vehicle

- If a power line falls on your vehicle while you are driving, slowly continue on to move completely clear of it (but do not drive over it).
- If your vehicle is immobilized, stay in it until help arrives. Do not get out unless there is an immediate threat to your safety.

If a Power Line Causes a Vehicle Fire

- If a downed power line causes a vehicle fire, escape the vehicle by jumping clear of the car with both feet together.
- Be sure not to touch metal and the ground at the same time.
- Keep your arms crossed over your chest while you jump.
- Once you land on the ground with both feet together, quickly shuffle away from the car. Do not walk or separate your feet as you move away from the vehicle.

If a Vehicle Collides with a Power Pole

- If a vehicle hits a power pole, knocking down power lines, call 911 and Puget Sound Energy at 1-888-225-5773 immediately.
- Never try to open a car door if there are live wires and stay well clear of the vehicle.

If Someone is Electrocuted by a Power Line

- If someone comes in contact with and is electrocuted by a power line, stay clear and call 911 for medical treatment immediately.
- Call Puget Sound Energy at 1-888-225-5773 immediately. Do not touch the victim or try to move the wire.
- Once the victim is no longer in contact with an electrical current, determine what first aid steps to take.
- If the victim is not breathing, give mouth-to-mouth resuscitation and perform cardiopulmonary resuscitation (CPR).
- Cover the victim with a blanket and keep them warm. If the victim's face is pale, raise the feet; if the face is red, keep the head raised.